

Product datasheet for **TA314973**

ARHGEF11 Rabbit Polyclonal Antibody

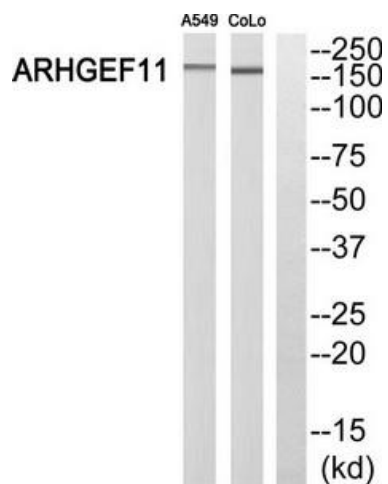
Product data:

Product Type:	Primary Antibodies
Applications:	WB
Recommended Dilution:	WB: 1:500~1:3000, ELISA: 1:5000
Reactivity:	Human, Mouse, Rat
Host:	Rabbit
Isotype:	IgG
Clonality:	Polyclonal
Immunogen:	The antiserum was produced against synthesized peptide derived from N-terminal of human ARHGEF11.
Formulation:	Phosphate buffered saline (without Mg ²⁺ and Ca ²⁺), pH 7.4, 150mM NaCl, 0.02% sodium azide and 50% glycerol.
Concentration:	lot specific
Purification:	The antibody was affinity-purified from rabbit antiserum by affinity-chromatography using epitope-specific immunogen.
Conjugation:	Unconjugated
Storage:	Store at -20°C as received.
Stability:	Stable for 12 months from date of receipt.
Gene Name:	Rho guanine nucleotide exchange factor 11
Database Link:	NP_055599 Entrez Gene 78966 Rat Entrez Gene 213498 Mouse Entrez Gene 9826 Human O15085
Synonyms:	GTRAP48; PDZ-RHOGEF
Note:	ARHGEF11 antibody detects endogenous levels of total ARHGEF11 protein.
Protein Families:	Druggable Genome
Protein Pathways:	Vascular smooth muscle contraction



[View online »](#)

Product images:



Western blot analysis of extracts from A549 cells and COLO 205 cells, using ARHGEF11 antibody. The lane on the right is treated with the synthesized peptide.