

## Product datasheet for **TA314971**

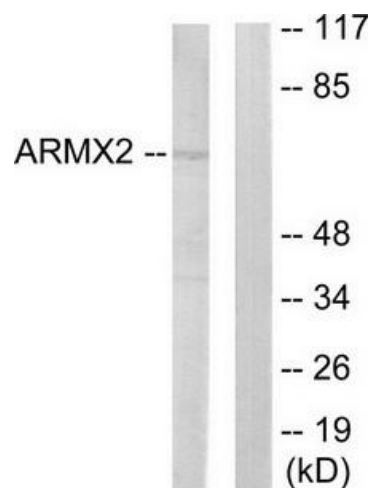
### ARMCX2 Rabbit Polyclonal Antibody

#### Product data:

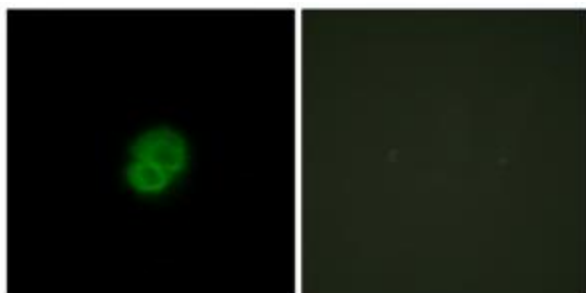
Product Type:	Primary Antibodies
Applications:	IF, WB
Recommended Dilution:	WB: 1:500~1:3000, IF: 1:100~1:500, ELISA: 1:20000
Reactivity:	Human, Mouse, Rat
Host:	Rabbit
Isotype:	IgG
Clonality:	Polyclonal
Immunogen:	The antiserum was produced against synthesized peptide derived from internal of human ARMX2.
Formulation:	Phosphate buffered saline (without Mg <sup>2+</sup> and Ca <sup>2+</sup> ), pH 7.4, 150mM NaCl, 0.02% sodium azide and 50% glycerol.
Concentration:	lot specific
Purification:	The antibody was affinity-purified from rabbit antiserum by affinity-chromatography using epitope-specific immunogen.
Conjugation:	Unconjugated
Storage:	Store at -20°C as received.
Stability:	Stable for 12 months from date of receipt.
Gene Name:	armadillo repeat containing, X-linked 2
Database Link:	<a href="#">NP_055597</a> <a href="#">Entrez Gene 67416 Mouse</a> <a href="#">Entrez Gene 367903 Rat</a> <a href="#">Entrez Gene 9823 Human</a> <a href="#">Q7L311</a>
Synonyms:	ALEX2; GASP9
Note:	ARMX2 antibody detects endogenous levels of total ARMX2 protein.
Protein Families:	Transmembrane



[View online »](#)

**Product images:**


Western blot analysis of extracts from 293 cells, using ARMX2 antibody. The lane on the right is treated with the synthesized peptide.



Immunofluorescence analysis of HepG2 cells, using ARMX2 antibody. The picture on the right is treated with the synthesized peptide.