

Product datasheet for **TA314970**

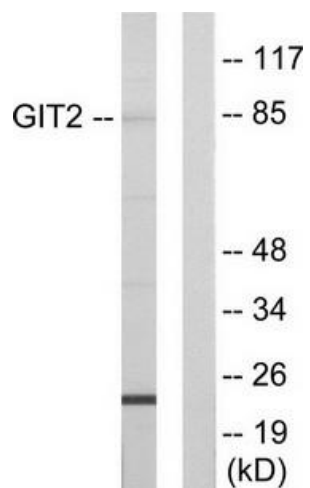
GIT2 Rabbit Polyclonal Antibody

Product data:

Product Type:	Primary Antibodies
Applications:	WB
Recommended Dilution:	WB: 1:500~1:3000, ELISA: 1:10000
Reactivity:	Human, Mouse, Rat
Host:	Rabbit
Isotype:	IgG
Clonality:	Polyclonal
Immunogen:	The antiserum was produced against synthesized peptide derived from internal of human GIT2.
Formulation:	Phosphate buffered saline (without Mg ²⁺ and Ca ²⁺), pH 7.4, 150mM NaCl, 0.02% sodium azide and 50% glycerol.
Concentration:	lot specific
Purification:	The antibody was affinity-purified from rabbit antiserum by affinity-chromatography using epitope-specific immunogen.
Conjugation:	Unconjugated
Storage:	Store at -20°C as received.
Stability:	Stable for 12 months from date of receipt.
Gene Name:	GIT ArfGAP 2
Database Link:	NP_001128685 Entrez Gene 26431 MouseEntrez Gene 304546 RatEntrez Gene 9815 Human Q14161
Synonyms:	CAT-2; CAT2
Note:	GIT2 antibody detects endogenous levels of total GIT2 protein.
Protein Families:	Druggable Genome
Protein Pathways:	Endocytosis



[View online »](#)

Product images:

Western blot analysis of extracts from HepG2 cells, using GIT2 antibody. The lane on the right is treated with the synthesized peptide.