

Product datasheet for **TA314969**

TOMM20 Rabbit Polyclonal Antibody

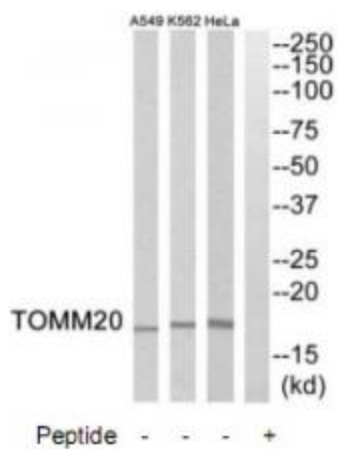
Product data:

Product Type:	Primary Antibodies
Applications:	WB
Recommended Dilution:	WB: 1:500~1:3000, ELISA: 1:40000
Reactivity:	Human, Mouse, Rat
Host:	Rabbit
Isotype:	IgG
Clonality:	Polyclonal
Immunogen:	The antiserum was produced against synthesized peptide derived from internal of human TOMM20.
Formulation:	Phosphate buffered saline (without Mg ²⁺ and Ca ²⁺), pH 7.4, 150mM NaCl, 0.02% sodium azide and 50% glycerol.
Concentration:	lot specific
Purification:	The antibody was affinity-purified from rabbit antiserum by affinity-chromatography using epitope-specific immunogen.
Conjugation:	Unconjugated
Storage:	Store at -20°C as received.
Stability:	Stable for 12 months from date of receipt.
Gene Name:	translocase of outer mitochondrial membrane 20
Database Link:	NP_055580 Entrez Gene 67952 MouseEntrez Gene 266601 RatEntrez Gene 9804 Human Q15388
Synonyms:	MAS20; MOM19; TOM20
Note:	TOMM20 antibody detects endogenous levels of total TOMM20 protein.
Protein Families:	Druggable Genome, Transmembrane



[View online »](#)

Product images:



Western blot analysis of extracts from HeLa cells, K562 cells and A549 cells, using TOMM20 antibody. The lane on the right is treated with the synthesized peptide.