

## Product datasheet for **TA314963**

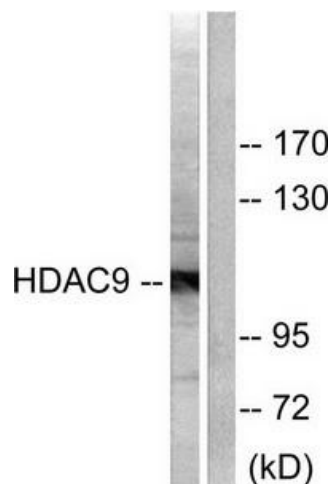
### HDAC9 Rabbit Polyclonal Antibody

#### Product data:

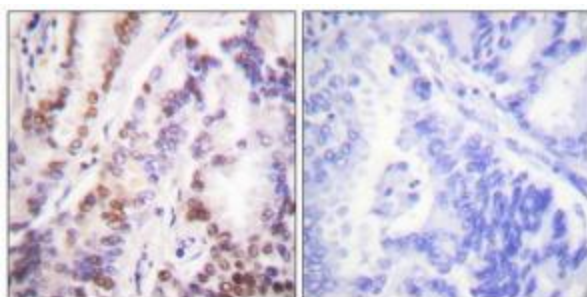
Product Type:	Primary Antibodies
Applications:	IF, IHC, WB
Recommended Dilution:	WB: 1:500~1:3000, IHC: 1:50~1:100, IF: 1:100~1:500, ELISA: 1:10000
Reactivity:	Human
Host:	Rabbit
Isotype:	IgG
Clonality:	Polyclonal
Immunogen:	The antiserum was produced against synthesized peptide derived from human HDAC9.
Formulation:	Phosphate buffered saline (without Mg <sup>2+</sup> and Ca <sup>2+</sup> ), pH 7.4, 150mM NaCl, 0.02% sodium azide and 50% glycerol.
Concentration:	lot specific
Purification:	The antibody was affinity-purified from rabbit antiserum by affinity-chromatography using epitope-specific immunogen.
Conjugation:	Unconjugated
Storage:	Store at -20°C as received.
Stability:	Stable for 12 months from date of receipt.
Gene Name:	histone deacetylase 9
Database Link:	<a href="#">NP_478057</a> <a href="#">Entrez Gene 9734 Human</a> <a href="#">Q9UKV0</a>
Synonyms:	DKFZp779K1053; HD7; HDAC; HDAC7; HDAC7B; HDAC9B; HDAC9FL; HDRP; KIAA0744; MITR
Note:	HDAC9 antibody detects endogenous levels of total HDAC9 protein.
Protein Families:	Druggable Genome, Transcription Factors



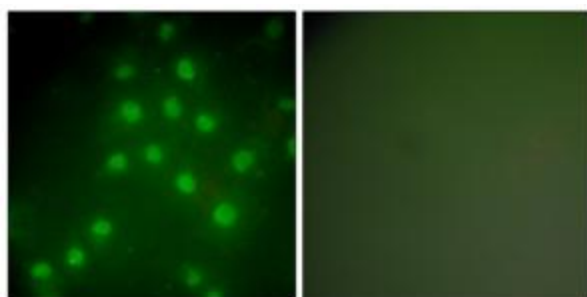
[View online »](#)

**Product images:**

Western blot analysis of extracts from HepG2 cells, using HDAC9 antibody (#TA314963). The lane on the right is treated with the synthesized peptide.



Immunohistochemical analysis of paraffin-embedded human lung carcinoma tissue using HDAC9 antibody (#TA314963). The picture on the right is treated with the synthesized peptide.



Immunofluorescence analysis of HepG2 cells, using HDAC9 antibody (#TA314963). The picture on the right is treated with the synthesized peptide.