

Product datasheet for **TA314962**

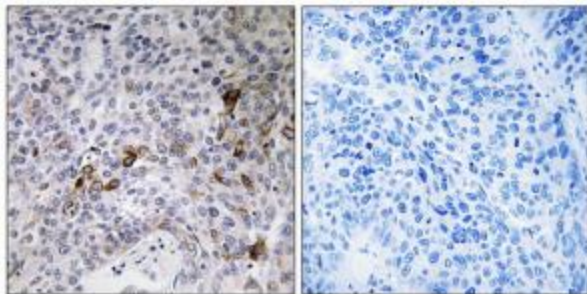
RAB11FIP3 Rabbit Polyclonal Antibody

Product data:

Product Type:	Primary Antibodies
Applications:	IHC
Recommended Dilution:	IHC: 1:50~1:100, ELISA: 1:10000
Reactivity:	Human, Mouse, Rat
Host:	Rabbit
Isotype:	IgG
Clonality:	Polyclonal
Immunogen:	The antiserum was produced against synthesized peptide derived from C-terminal of human RAB11FIP3.
Formulation:	Phosphate buffered saline (without Mg ²⁺ and Ca ²⁺), pH 7.4, 150mM NaCl, 0.02% sodium azide and 50% glycerol.
Concentration:	lot specific
Purification:	The antibody was affinity-purified from rabbit antiserum by affinity-chromatography using epitope-specific immunogen.
Conjugation:	Unconjugated
Storage:	Store at -20°C as received.
Stability:	Stable for 12 months from date of receipt.
Gene Name:	RAB11 family interacting protein 3
Database Link:	NP_055515 Entrez Gene 215445 MouseEntrez Gene 303002 RatEntrez Gene 9727 Human O75154
Synonyms:	CART1; Rab11-FIP3
Note:	RAB11FIP3 antibody detects endogenous levels of total RAB11FIP3 protein.
Protein Pathways:	Endocytosis



[View online »](#)

Product images:

Immunohistochemistry analysis of paraffin-embedded human lung carcinoma tissue using RAB11FIP3 antibody. The picture on the right is treated with the synthesized peptide.