

## Product datasheet for **TA314959**

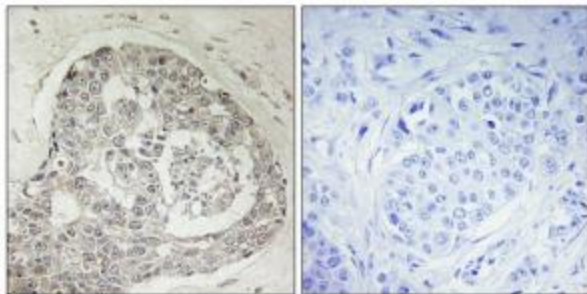
### KIAA0100 Rabbit Polyclonal Antibody

#### Product data:

|                       |  |
|-----------------------|--|
| Product Type:         | Primary Antibodies   |
| Applications:         | IHC  |
| Recommended Dilution: | IHC: 1:50~1:100, IF: 1:100~1:500, ELISA: 1:20000   |
| Reactivity:           | Human  |
| Host:                 | Rabbit   |
| Isotype:              | IgG  |
| Clonality:            | Polyclonal   |
| Immunogen:            | The antiserum was produced against synthesized peptide derived from internal of human K0100.   |
| Formulation:          | Phosphate buffered saline (without Mg <sup>2+</sup> and Ca <sup>2+</sup> ), pH 7.4, 150mM NaCl, 0.02% sodium azide and 50% glycerol. |
| Concentration:        | lot specific   |
| Purification:         | The antibody was affinity-purified from rabbit antiserum by affinity-chromatography using epitope-specific immunogen.                |
| Conjugation:          | Unconjugated   |
| Storage:              | Store at -20°C as received.  |
| Stability:            | Stable for 12 months from date of receipt.   |
| Gene Name:            | KIAA0100   |
| Database Link:        | <a href="#">NP_055495</a><br><a href="#">Entrez Gene 9703 Human Q14667</a>   |
| Synonyms:             | BCOX; BCOX1; CT101; FMP27  |
| Note:                 | K0100 antibody detects endogenous levels of total K0100 protein.   |
| Protein Families:     | Transmembrane  |



[View online »](#)

**Product images:**

Immunohistochemistry analysis of paraffin-embedded human breast carcinoma tissue, using K0100 antibody. The picture on the right is treated with the synthesized peptide.