

## Product datasheet for **TA314946**

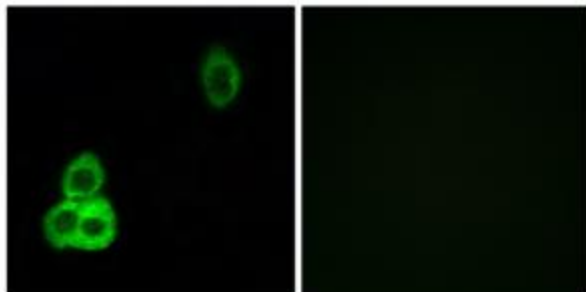
### CELSR1 Rabbit Polyclonal Antibody

#### Product data:

Product Type:	Primary Antibodies
Applications:	IF
Recommended Dilution:	IF: 1:100~1:500, ELISA: 1:10000
Reactivity:	Human, Mouse, Rat
Host:	Rabbit
Isotype:	IgG
Clonality:	Polyclonal
Immunogen:	The antiserum was produced against synthesized peptide derived from internal of human CELSR1.
Formulation:	Phosphate buffered saline (without Mg <sup>2+</sup> and Ca <sup>2+</sup> ), pH 7.4, 150mM NaCl, 0.02% sodium azide and 50% glycerol.
Concentration:	lot specific
Purification:	The antibody was affinity-purified from rabbit antiserum by affinity-chromatography using epitope-specific immunogen.
Conjugation:	Unconjugated
Storage:	Store at -20°C as received.
Stability:	Stable for 12 months from date of receipt.
Gene Name:	cadherin EGF LAG seven-pass G-type receptor 1
Database Link:	<a href="#">NP_055061</a> <a href="#">Entrez Gene 12614 Mouse</a> <a href="#">Entrez Gene 300128 Rat</a> <a href="#">Entrez Gene 9620 Human</a> <a href="#">Q9NYQ6</a>
Synonyms:	ADGRC1; CDHF9; FMI2; HFMI2; ME2
Note:	CELSR1 antibody detects endogenous levels of total CELSR1 protein.
Protein Families:	Druggable Genome, Transmembrane



[View online »](#)

**Product images:**

Immunofluorescence analysis of MCF-7 cells, using CELSR1 antibody. The picture on the right is treated with the synthesized peptide.