

Product datasheet for **TA314944**

RIN1 Rabbit Polyclonal Antibody

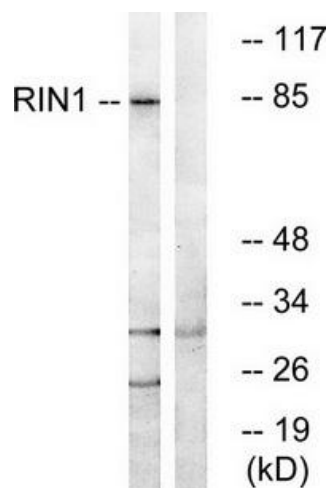
Product data:

| | |
|-----------------------|---|
| Product Type: | Primary Antibodies |
| Applications: | WB |
| Recommended Dilution: | WB: 1:500~1:3000, ELISA: 1:40000 |
| Reactivity: | Human, Mouse, Rat |
| Host: | Rabbit |
| Isotype: | IgG |
| Clonality: | Polyclonal |
| Immunogen: | The antiserum was produced against synthesized peptide derived from internal of human RIN1. |
| Formulation: | Phosphate buffered saline (without Mg ²⁺ and Ca ²⁺), pH 7.4, 150mM NaCl, 0.02% sodium azide and 50% glycerol. |
| Concentration: | lot specific |
| Purification: | The antibody was affinity-purified from rabbit antiserum by affinity-chromatography using epitope-specific immunogen. |
| Conjugation: | Unconjugated |
| Storage: | Store at -20°C as received. |
| Stability: | Stable for 12 months from date of receipt. |
| Gene Name: | Ras and Rab interactor 1 |
| Database Link: | NP_004283 Entrez Gene 207119 Rat Entrez Gene 225870 Mouse Entrez Gene 9610 Human Q13671 |
| Synonyms: | RIN1 |
| Note: | RIN1 antibody detects endogenous levels of total RIN1 protein. |



[View online »](#)

Product images:



Western blot analysis of extracts from K562 cells, using RIN1 antibody. The lane on the right is treated with the synthesized peptide.