

## Product datasheet for **TA314941**

### WTAP Rabbit Polyclonal Antibody

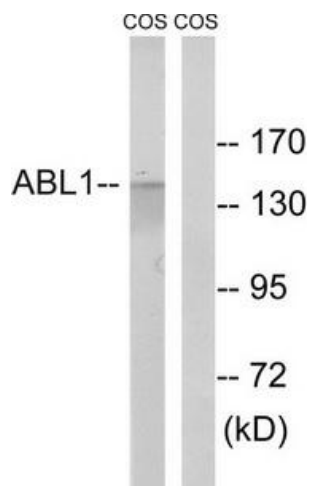
#### Product data:

Product Type:	Primary Antibodies
Applications:	WB
Recommended Dilution:	WB: 1:500~1:3000, ELISA: 1:20000
Reactivity:	Human, Mouse, Rat
Host:	Rabbit
Isotype:	IgG
Clonality:	Polyclonal
Immunogen:	The antiserum was produced against synthesized non-phosphopeptide derived from human ABL1 around the phosphorylation site of threonine 735 (S-V-TP-L-P).
Formulation:	Phosphate buffered saline (without Mg <sup>2+</sup> and Ca <sup>2+</sup> ), pH 7.4, 150mM NaCl, 0.02% sodium azide and 50% glycerol.
Concentration:	lot specific
Purification:	The antibody was affinity-purified from rabbit antiserum by affinity-chromatography using epitope-specific immunogen.
Conjugation:	Unconjugated
Storage:	Store at -20°C as received.
Stability:	Stable for 12 months from date of receipt.
Gene Name:	Wilms tumor 1 associated protein
Database Link:	<a href="#">NP_690597</a> <a href="#">Entrez Gene 60532 MouseEntrez Gene 499020 RatEntrez Gene 9589 Human Q15007</a>
Synonyms:	Mum2
Note:	ABL1 (Ab-735) antibody detects endogenous levels of total ABL1 protein.
Protein Families:	Druggable Genome



[View online »](#)

## Product images:



Western blot analysis of extracts from COS cells, treated with calyculinA (50ng/ml, 30mins), using ABL1 (Ab-735) antibody. The lane on the right is treated with the synthesized peptide.