

## Product datasheet for **TA314938**

### MAD2L1 binding protein (MAD2L1BP) Rabbit Polyclonal Antibody

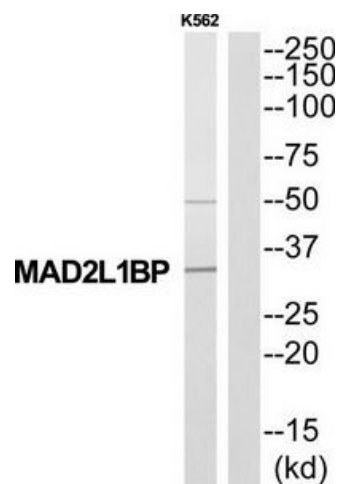
#### Product data:

|                       |                                                                                                                                      |
|-----------------------|--------------------------------------------------------------------------------------------------------------------------------------|
| Product Type:         | Primary Antibodies                                                                                                                   |
| Applications:         | WB                                                                                                                                   |
| Recommended Dilution: | WB: 1:500~1:3000, ELISA: 1:10000                                                                                                     |
| Reactivity:           | Human                                                                                                                                |
| Host:                 | Rabbit                                                                                                                               |
| Isotype:              | IgG                                                                                                                                  |
| Clonality:            | Polyclonal                                                                                                                           |
| Immunogen:            | The antiserum was produced against synthesized peptide derived from N-terminal of human MAD2L1BP.                                    |
| Formulation:          | Phosphate buffered saline (without Mg <sup>2+</sup> and Ca <sup>2+</sup> ), pH 7.4, 150mM NaCl, 0.02% sodium azide and 50% glycerol. |
| Concentration:        | lot specific                                                                                                                         |
| Purification:         | The antibody was affinity-purified from rabbit antiserum by affinity-chromatography using epitope-specific immunogen.                |
| Conjugation:          | Unconjugated                                                                                                                         |
| Storage:              | Store at -20°C as received.                                                                                                          |
| Stability:            | Stable for 12 months from date of receipt.                                                                                           |
| Gene Name:            | MAD2L1 binding protein                                                                                                               |
| Database Link:        | <a href="#">NP_001003690</a><br><a href="#">Entrez Gene 9587 Human</a><br><a href="#">Q15013</a>                                     |
| Synonyms:             | CMT2                                                                                                                                 |
| Note:                 | MAD2L1BP antibody detects endogenous levels of total MAD2L1BP protein.                                                               |
| Protein Families:     | Druggable Genome                                                                                                                     |



[View online »](#)

## Product images:



Western blot analysis of extracts from K562 cells, using MAD2L1BP antibody. The lane on the right is treated with the synthesized peptide.