

Product datasheet for **TA314934**

GTF2IRD1 Rabbit Polyclonal Antibody

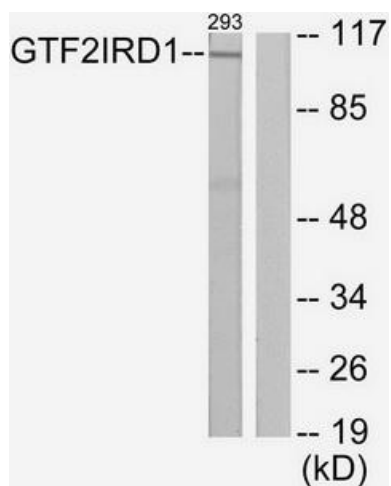
Product data:

Product Type:	Primary Antibodies
Applications:	WB
Recommended Dilution:	WB: 1:500~1:3000, ELISA: 1:20000
Reactivity:	Human, Mouse, Rat
Host:	Rabbit
Isotype:	IgG
Clonality:	Polyclonal
Immunogen:	The antiserum was produced against synthesized peptide derived from N-terminal of human GTF2IRD1.
Formulation:	Phosphate buffered saline (without Mg ²⁺ and Ca ²⁺), pH 7.4, 150mM NaCl, 0.02% sodium azide and 50% glycerol.
Concentration:	lot specific
Purification:	The antibody was affinity-purified from rabbit antiserum by affinity-chromatography using epitope-specific immunogen.
Conjugation:	Unconjugated
Storage:	Store at -20°C as received.
Stability:	Stable for 12 months from date of receipt.
Gene Name:	GTF2I repeat domain containing 1
Database Link:	NP_057412 Entrez Gene 57080 MouseEntrez Gene 246770 RatEntrez Gene 9569 Human Q9UHL9
Synonyms:	BEN; CREAM1; GTF3; hMusTRD1alpha1; MUSTRD1; RBAP2; WBS; WBSR11; WBSR12
Note:	GTF2IRD1 antibody detects endogenous levels of total GTF2IRD1 protein.
Protein Families:	Druggable Genome, Transcription Factors
Protein Pathways:	Basal transcription factors



[View online »](#)

Product images:



Western blot analysis of extracts from 293 cells, using GTF2IRD1 antibody. The lane on the right is treated with the synthesized peptide.