

Product datasheet for **TA314932**

SEC22L1 (SEC22B) Rabbit Polyclonal Antibody

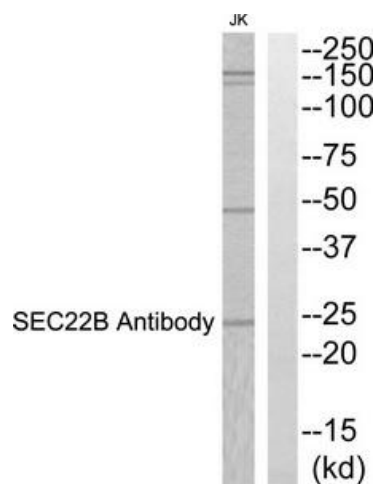
Product data:

Product Type:	Primary Antibodies
Applications:	WB
Recommended Dilution:	WB: 1:500~1:3000, ELISA: 1:10000
Reactivity:	Human, Mouse, Rat
Host:	Rabbit
Isotype:	IgG
Clonality:	Polyclonal
Immunogen:	The antiserum was produced against synthesized peptide derived from Internal of human SEC22B.
Formulation:	Phosphate buffered saline (without Mg ²⁺ and Ca ²⁺), pH 7.4, 150mM NaCl, 0.02% sodium azide and 50% glycerol.
Concentration:	lot specific
Purification:	The antibody was affinity-purified from rabbit antiserum by affinity-chromatography using epitope-specific immunogen.
Conjugation:	Unconjugated
Storage:	Store at -20°C as received.
Stability:	Stable for 12 months from date of receipt.
Gene Name:	SEC22 homolog B, vesicle trafficking protein (gene/pseudogene)
Database Link:	NP_004883 Entrez Gene 20333 MouseEntrez Gene 310710 RatEntrez Gene 9554 Human O75396
Synonyms:	ERS-24; SEC22L1
Note:	SEC22B Antibody detects endogenous levels of total SEC22B protein.
Protein Pathways:	SNARE interactions in vesicular transport



[View online »](#)

Product images:



Western blot analysis of extracts from JK cells, using SEC22B Antibody. The lane on the right is treated with the synthesized peptide.