

Product datasheet for **TA314923**

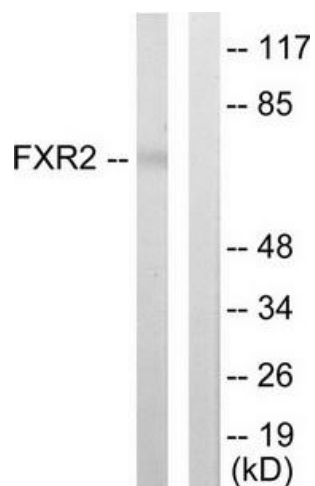
FXR2 Rabbit Polyclonal Antibody

Product data:

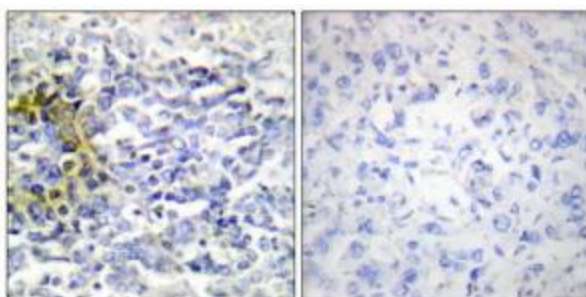
Product Type:	Primary Antibodies
Applications:	IF, IHC, WB
Recommended Dilution:	WB: 1:500~1:3000, IHC: 1:50~1:100, IF: 1:100~1:500, ELISA: 1:10000
Reactivity:	Human, Mouse
Host:	Rabbit
Isotype:	IgG
Clonality:	Polyclonal
Immunogen:	The antiserum was produced against synthesized peptide derived from internal of human FXR2.
Formulation:	Phosphate buffered saline (without Mg ²⁺ and Ca ²⁺), pH 7.4, 150mM NaCl, 0.02% sodium azide and 50% glycerol.
Concentration:	lot specific
Purification:	The antibody was affinity-purified from rabbit antiserum by affinity-chromatography using epitope-specific immunogen.
Conjugation:	Unconjugated
Storage:	Store at -20°C as received.
Stability:	Stable for 12 months from date of receipt.
Gene Name:	FMR1 autosomal homolog 2
Database Link:	NP_004851 Entrez Gene 23879 Mouse Entrez Gene 9513 Human P51116
Synonyms:	FMR1L2; FXR2P
Note:	FXR2 antibody detects endogenous levels of total FXR2 protein.



[View online »](#)

Product images:

Western blot analysis of extracts from COLO205 cells, using FXR2 antibody. The lane on the right is treated with the synthesized peptide.



Immunohistochemistry analysis of paraffin-embedded human lung carcinoma tissue using FXR2 antibody. The picture on the right is treated with the synthesized peptide.



Immunofluorescence analysis of A549 cells, using FXR2 antibody. The picture on the right is treated with the synthesized peptide.