

Product datasheet for **TA314914**

AIM2 Rabbit Polyclonal Antibody

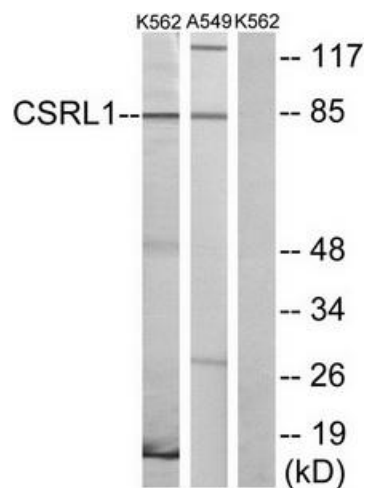
Product data:

Product Type:	Primary Antibodies
Applications:	IF, WB
Recommended Dilution:	WB: 1:500~1:3000, IF: 1:100~1:500, ELISA: 1:10000
Reactivity:	Human
Host:	Rabbit
Isotype:	IgG
Clonality:	Polyclonal
Immunogen:	The antiserum was produced against synthesized peptide derived from internal of human CSRL1.
Formulation:	Phosphate buffered saline (without Mg ²⁺ and Ca ²⁺), pH 7.4, 150mM NaCl, 0.02% sodium azide and 50% glycerol.
Concentration:	lot specific
Purification:	The antibody was affinity-purified from rabbit antiserum by affinity-chromatography using epitope-specific immunogen.
Conjugation:	Unconjugated
Storage:	Store at -20°C as received.
Stability:	Stable for 12 months from date of receipt.
Gene Name:	absent in melanoma 2
Database Link:	NP_004824 Entrez Gene 9447 Human O14862
Synonyms:	PYHIN4
Note:	CSRL1 antibody detects endogenous levels of total CSRL1 protein.
Protein Pathways:	Cytosolic DNA-sensing pathway

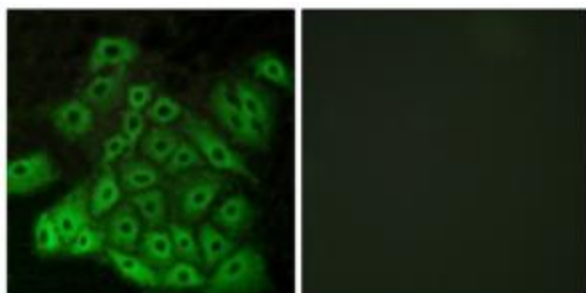


[View online »](#)

Product images:



Western blot analysis of extracts from K562 cells and A549 cells, using CSRL1 antibody. The lane on the right is treated with the synthesized peptide.



Immunofluorescence analysis of A549 cells, using CSRL1 antibody. The picture on the right is treated with the synthesized peptide.