

Product datasheet for **TA314912**

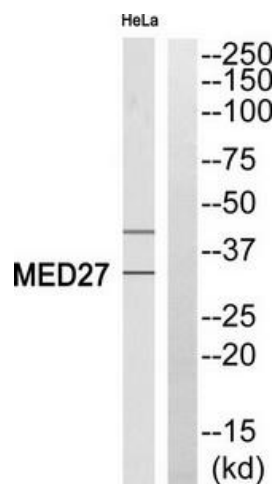
CRSP8 (MED27) Rabbit Polyclonal Antibody

Product data:

Product Type:	Primary Antibodies
Applications:	WB
Recommended Dilution:	WB: 1:500~1:3000, ELISA: 1:10000
Reactivity:	Human, Mouse
Host:	Rabbit
Isotype:	IgG
Clonality:	Polyclonal
Immunogen:	The antiserum was produced against synthesized peptide derived from Internal of human MED27.
Formulation:	Phosphate buffered saline (without Mg ²⁺ and Ca ²⁺), pH 7.4, 150mM NaCl, 0.02% sodium azide and 50% glycerol.
Concentration:	lot specific
Purification:	The antibody was affinity-purified from rabbit antiserum by affinity-chromatography using epitope-specific immunogen.
Conjugation:	Unconjugated
Storage:	Store at -20°C as received.
Stability:	Stable for 12 months from date of receipt.
Gene Name:	mediator complex subunit 27
Database Link:	NP_004260 Entrez Gene 68975 Mouse Entrez Gene 9442 Human Q6P2C8
Synonyms:	CRAP34; CRSP8; CRSP34; MED3; TRAP37
Note:	MED27 antibody detects endogenous levels of total MED27 protein.

[View online »](#)

Product images:



Western blot analysis of extracts from HeLa cells, using MED27 antibody. The lane on the right is treated with the synthesized peptide.