

## Product datasheet for **TA314909**

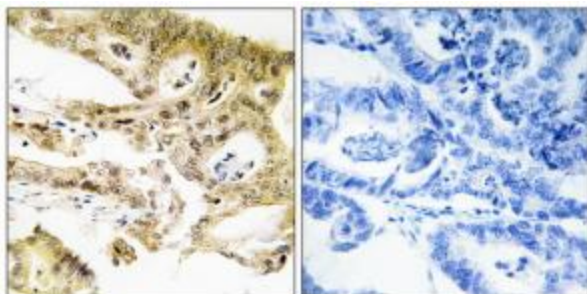
### DRIP130 (MED23) Rabbit Polyclonal Antibody

#### Product data:

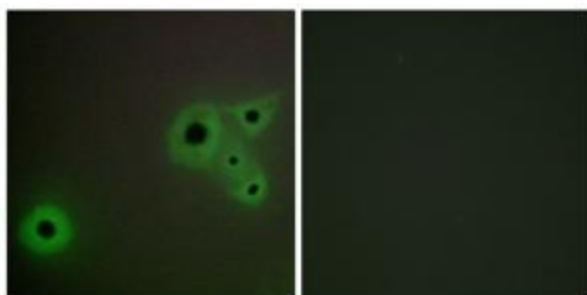
Product Type:	Primary Antibodies
Applications:	IF, IHC
Recommended Dilution:	IHC: 1:50~1:100, IF: 1:100~1:500, ELISA: 1:1000
Reactivity:	Human, Mouse, Rat
Host:	Rabbit
Isotype:	IgG
Clonality:	Polyclonal
Immunogen:	The antiserum was produced against synthesized peptide derived from internal of human MED23.
Formulation:	Phosphate buffered saline (without Mg <sup>2+</sup> and Ca <sup>2+</sup> ), pH 7.4, 150mM NaCl, 0.02% sodium azide and 50% glycerol.
Concentration:	lot specific
Purification:	The antibody was affinity-purified from rabbit antiserum by affinity-chromatography using epitope-specific immunogen.
Conjugation:	Unconjugated
Storage:	Store at -20°C as received.
Stability:	Stable for 12 months from date of receipt.
Gene Name:	mediator complex subunit 23
Database Link:	<a href="#">NP_057063</a> <a href="#">Entrez Gene 70208 MouseEntrez Gene 309565 RatEntrez Gene 9439 Human Q9ULK4</a>
Synonyms:	ARC130; CRSP3; CRSP130; CRSP133; DRIP130; MRT18; SUR-2; SUR2
Note:	MED23 antibody detects endogenous levels of total MED23 protein.
Protein Families:	Druggable Genome, Transcription Factors



[View online »](#)

**Product images:**

Immunohistochemistry analysis of paraffin-embedded human colon carcinoma tissue, using MED23 antibody. The picture on the right is treated with the synthesized peptide.



Immunofluorescence analysis of A549 cells, using MED23 antibody. The picture on the right is treated with the synthesized peptide.