

Product datasheet for **TA314907**

CHST2 Rabbit Polyclonal Antibody

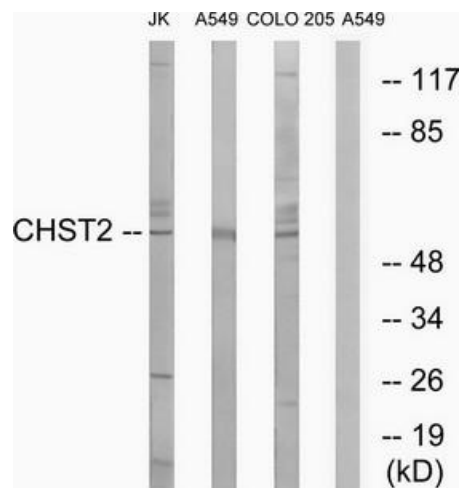
Product data:

Product Type:	Primary Antibodies
Applications:	WB
Recommended Dilution:	WB: 1:500~1:3000, ELISA: 1:10000
Reactivity:	Human
Host:	Rabbit
Isotype:	IgG
Clonality:	Polyclonal
Immunogen:	The antiserum was produced against synthesized peptide derived from internal of human CHST2.
Formulation:	Phosphate buffered saline (without Mg ²⁺ and Ca ²⁺), pH 7.4, 150mM NaCl, 0.02% sodium azide and 50% glycerol.
Concentration:	lot specific
Purification:	The antibody was affinity-purified from rabbit antiserum by affinity-chromatography using epitope-specific immunogen.
Conjugation:	Unconjugated
Storage:	Store at -20°C as received.
Stability:	Stable for 12 months from date of receipt.
Gene Name:	carbohydrate sulfotransferase 2
Database Link:	NP_004258 Entrez Gene 9435 Human Q9Y4C5
Synonyms:	C6ST; gIcNAc6ST-1; Gn6ST-1; GST-2; GST2; HEL-S-75
Note:	CHST2 antibody detects endogenous levels of total CHST2 protein.
Protein Families:	Transmembrane
Protein Pathways:	Keratan sulfate biosynthesis, Metabolic pathways



[View online »](#)

Product images:



Western blot analysis of extracts from Jurkat cells, A549 cells and COLO cells, using CHST2 antibody. The lane on the right is treated with the synthesized peptide.