

Product datasheet for **TA314901**

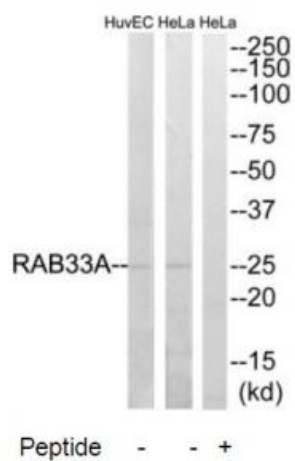
RAB33A Rabbit Polyclonal Antibody

Product data:

Product Type:	Primary Antibodies
Applications:	WB
Recommended Dilution:	WB: 1:500~1:3000, IHC: 1:50~1:100, ELISA: 1:20000
Reactivity:	Mouse, Human, Rat
Host:	Rabbit
Isotype:	IgG
Clonality:	Polyclonal
Immunogen:	The antiserum was produced against synthesized peptide derived from internal of human RAB33A.
Formulation:	Phosphate buffered saline (without Mg ²⁺ and Ca ²⁺), pH 7.4, 150mM NaCl, 0.02% sodium azide and 50% glycerol.
Concentration:	lot specific
Purification:	The antibody was affinity-purified from rabbit antiserum by affinity-chromatography using epitope-specific immunogen.
Conjugation:	Unconjugated
Storage:	Store at -20°C as received.
Stability:	Stable for 12 months from date of receipt.
Gene Name:	RAB33A, member RAS oncogene family
Database Link:	NP_004785 Entrez Gene 19337 Mouse Entrez Gene 317580 Rat Entrez Gene 9363 Human Q14088
Synonyms:	RabS10
Note:	RAB33A antibody detects endogenous levels of total RAB33A protein.
Protein Families:	Druggable Genome



[View online »](#)

Product images:


Western blot analysis of extracts from HeLa and HuvEc cells, using RAB33A antibody. The lane on the right is treated with the synthesized peptide.