

## Product datasheet for **TA314896**

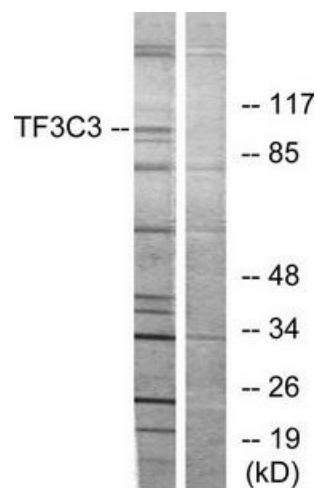
### GTF3C3 Rabbit Polyclonal Antibody

#### Product data:

Product Type:	Primary Antibodies
Applications:	WB
Recommended Dilution:	WB: 1:500~1:3000, ELISA: 1:1000
Reactivity:	Human, Mouse
Host:	Rabbit
Isotype:	IgG
Clonality:	Polyclonal
Immunogen:	The antiserum was produced against synthesized peptide derived from internal of human TF3C3.
Formulation:	Phosphate buffered saline (without Mg <sup>2+</sup> and Ca <sup>2+</sup> ), pH 7.4, 150mM NaCl, 0.02% sodium azide and 50% glycerol.
Concentration:	lot specific
Purification:	The antibody was affinity-purified from rabbit antiserum by affinity-chromatography using epitope-specific immunogen.
Conjugation:	Unconjugated
Storage:	Store at -20°C as received.
Stability:	Stable for 12 months from date of receipt.
Gene Name:	general transcription factor IIIc subunit 3
Database Link:	<a href="#">NP_036218</a> <a href="#">Entrez Gene 98488 Mouse</a> <a href="#">Entrez Gene 9330 Human</a> <a href="#">Q9Y5Q9</a>
Synonyms:	TFiiiC2-102; TFIIC102; TFIICgamma
Note:	TF3C3 antibody detects endogenous levels of total TF3C3 protein.
Protein Families:	Transcription Factors



[View online »](#)

**Product images:**

Western blot analysis of extracts from 293 cells, using TF3C3 antibody. The lane on the right is treated with the synthesized peptide.