

Product datasheet for **TA314894**

ASC1 (TRIP4) Rabbit Polyclonal Antibody

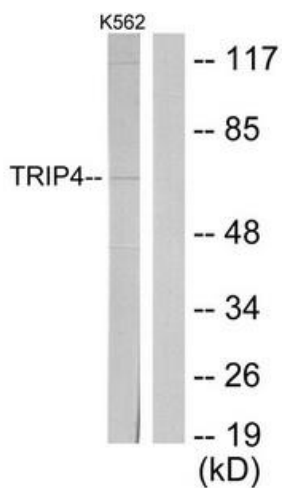
Product data:

Product Type:	Primary Antibodies
Applications:	WB
Recommended Dilution:	WB: 1:500~1:3000, ELISA: 1:5000
Reactivity:	Human, Mouse
Host:	Rabbit
Isotype:	IgG
Clonality:	Polyclonal
Immunogen:	The antiserum was produced against synthesized peptide derived from internal of human TRIP4.
Formulation:	Phosphate buffered saline (without Mg ²⁺ and Ca ²⁺), pH 7.4, 150mM NaCl, 0.02% sodium azide and 50% glycerol.
Concentration:	lot specific
Purification:	The antibody was affinity-purified from rabbit antiserum by affinity-chromatography using epitope-specific immunogen.
Conjugation:	Unconjugated
Storage:	Store at -20°C as received.
Stability:	Stable for 12 months from date of receipt.
Gene Name:	thyroid hormone receptor interactor 4
Database Link:	NP_057297 Entrez Gene 56404 Mouse Entrez Gene 9325 Human Q15650
Synonyms:	ASC-1; ASC1; HsT17391; MDCDC; SMABF1; ZC2HC5
Note:	TRIP4 antibody detects endogenous levels of total TRIP4 protein.
Protein Families:	Druggable Genome, Nuclear Hormone Receptor, Transcription Factors



[View online »](#)

Product images:



Western blot analysis of extracts from K562 cells, using TRIP4 antibody. The lane on the right is treated with the synthesized peptide.