

Product datasheet for **TA314893**

TRIP13 Rabbit Polyclonal Antibody

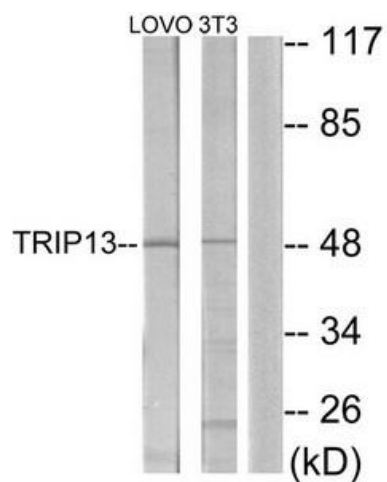
Product data:

Product Type:	Primary Antibodies
Applications:	WB
Recommended Dilution:	WB: 1:500~1:3000, ELISA: 1:1000
Reactivity:	Human, Mouse, Rat
Host:	Rabbit
Isotype:	IgG
Clonality:	Polyclonal
Immunogen:	The antiserum was produced against synthesized peptide derived from C-terminal of human TRIP13.
Formulation:	Phosphate buffered saline (without Mg ²⁺ and Ca ²⁺), pH 7.4, 150mM NaCl, 0.02% sodium azide and 50% glycerol.
Concentration:	lot specific
Purification:	The antibody was affinity-purified from rabbit antiserum by affinity-chromatography using epitope-specific immunogen.
Conjugation:	Unconjugated
Storage:	Store at -20°C as received.
Stability:	Stable for 12 months from date of receipt.
Gene Name:	thyroid hormone receptor interactor 13
Database Link:	NP_001159732 Entrez Gene 69716 MouseEntrez Gene 292206 RatEntrez Gene 9319 Human Q15645
Synonyms:	16E1BP
Note:	TRIP13 antibody detects endogenous levels of total TRIP13 protein.
Protein Families:	Druggable Genome, Stem cell - Pluripotency, Transcription Factors



[View online »](#)

Product images:



Western blot analysis of extracts from LOVO cells and NIH-3T3 cells, using TRIP13 antibody. The lane on the right is treated with the synthesized peptide.