

Product datasheet for **TA314889**

S1PR2 Rabbit Polyclonal Antibody

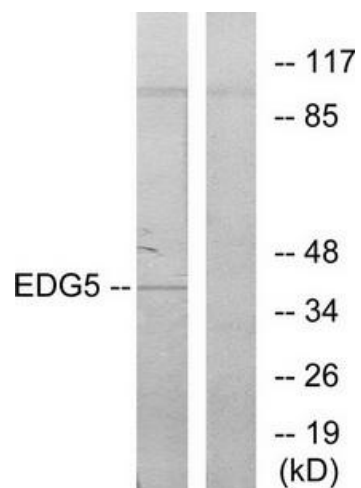
Product data:

Product Type:	Primary Antibodies
Applications:	WB
Recommended Dilution:	WB: 1:500~1:3000, ELISA: 1:10000
Reactivity:	Human, Mouse, Rat
Host:	Rabbit
Isotype:	IgG
Clonality:	Polyclonal
Immunogen:	The antiserum was produced against synthesized peptide derived from internal of human EDG5.
Formulation:	Phosphate buffered saline (without Mg ²⁺ and Ca ²⁺), pH 7.4, 150mM NaCl, 0.02% sodium azide and 50% glycerol.
Concentration:	lot specific
Purification:	The antibody was affinity-purified from rabbit antiserum by affinity-chromatography using epitope-specific immunogen.
Conjugation:	Unconjugated
Storage:	Store at -20°C as received.
Stability:	Stable for 12 months from date of receipt.
Gene Name:	sphingosine-1-phosphate receptor 2
Database Link:	NP_004221 Entrez Gene 14739 Mouse Entrez Gene 29415 Rat Entrez Gene 9294 Human O95136
Synonyms:	AGR16; EDG-5; EDG5; Gpcr13; H218; LPB2; S1P2
Note:	EDG5 antibody detects endogenous levels of total EDG5 protein.
Protein Families:	Druggable Genome, GPCR, Transmembrane
Protein Pathways:	Neuroactive ligand-receptor interaction



[View online »](#)

Product images:



Western blot analysis of extracts from COLO205 cells, using EDG5 antibody. The lane on the right is treated with the synthesized peptide.