

Product datasheet for **TA314886**

GPR37L1 Rabbit Polyclonal Antibody

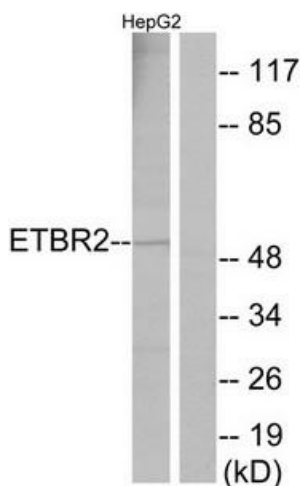
Product data:

Product Type:	Primary Antibodies
Applications:	IF, IHC, WB
Recommended Dilution:	WB: 1:500~1:3000, IHC: 1:50~1:100, IF: 1:100~1:500, ELISA: 1:1000
Reactivity:	Human
Host:	Rabbit
Isotype:	IgG
Clonality:	Polyclonal
Immunogen:	The antiserum was produced against synthesized peptide derived from internal of human ETBR2.
Formulation:	Phosphate buffered saline (without Mg ²⁺ and Ca ²⁺), pH 7.4, 150mM NaCl, 0.02% sodium azide and 50% glycerol.
Concentration:	lot specific
Purification:	The antibody was affinity-purified from rabbit antiserum by affinity-chromatography using epitope-specific immunogen.
Conjugation:	Unconjugated
Storage:	Store at -20°C as received.
Stability:	Stable for 12 months from date of receipt.
Gene Name:	G protein-coupled receptor 37 like 1
Database Link:	NP_004758 Entrez Gene 9283 Human O60883
Synonyms:	ET(B)R-LP-2; ETBR-LP-2
Note:	ETBR2 antibody detects endogenous levels of total ETBR2 protein.
Protein Families:	Druggable Genome, GPCR, Transmembrane

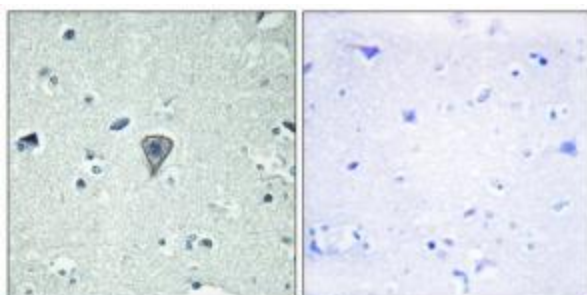


[View online »](#)

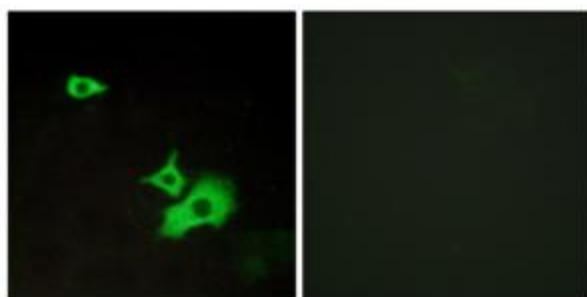
Product images:



Western blot analysis of extracts from HepG2 cells, using ETBR2 antibody. The lane on the right is treated with the synthesized peptide.



Immunohistochemistry analysis of paraffin-embedded human brain tissue using ETBR2 antibody. The picture on the right is treated with the synthesized peptide.



Immunofluorescence analysis of LOVO cells, using ETBR2 antibody. The picture on the right is treated with the synthesized peptide.