

Product datasheet for **TA314885**

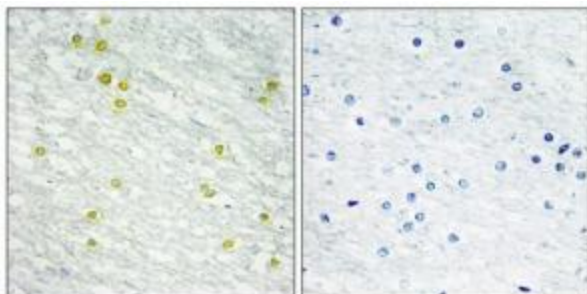
MED14 Rabbit Polyclonal Antibody

Product data:

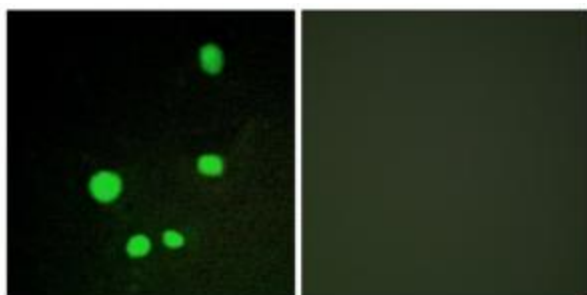
Product Type:	Primary Antibodies
Applications:	IF, IHC
Recommended Dilution:	IHC: 1:50~1:100, IF: 1:100~1:500, ELISA: 1:5000
Reactivity:	Human, Mouse
Host:	Rabbit
Isotype:	IgG
Clonality:	Polyclonal
Immunogen:	The antiserum was produced against synthesized peptide derived from internal of human MED14.
Formulation:	Phosphate buffered saline (without Mg ²⁺ and Ca ²⁺), pH 7.4, 150mM NaCl, 0.02% sodium azide and 50% glycerol.
Concentration:	lot specific
Purification:	The antibody was affinity-purified from rabbit antiserum by affinity-chromatography using epitope-specific immunogen.
Conjugation:	Unconjugated
Storage:	Store at -20°C as received.
Stability:	Stable for 12 months from date of receipt.
Gene Name:	mediator complex subunit 14
Database Link:	NP_004220 Entrez Gene 26896 Mouse Entrez Gene 9282 Human O60244
Synonyms:	CRSP2; CRSP150; CSRP; CXorf4; DRIP150; EXLM1; RGR1; TRAP170
Note:	MED14 antibody detects endogenous levels of total MED14 protein.
Protein Families:	Druggable Genome, Transcription Factors



[View online »](#)

Product images:


Immunohistochemistry analysis of paraffin-embedded human brain tissue, using MED14 antibody. The picture on the right is treated with the synthesized peptide.



Immunofluorescence analysis of COS-7 cells, using MED14 antibody. The picture on the right is treated with the synthesized peptide.