

## Product datasheet for **TA314881**

### DLGAP1 Rabbit Polyclonal Antibody

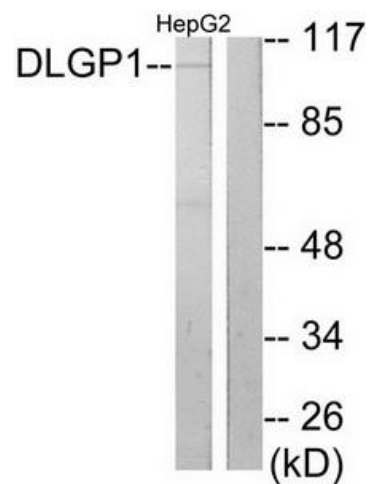
#### Product data:

Product Type:	Primary Antibodies
Applications:	IF, WB
Recommended Dilution:	WB: 1:500~1:3000, IF: 1:100~1:500, ELISA: 1:5000
Reactivity:	Human, Mouse, Rat
Host:	Rabbit
Isotype:	IgG
Clonality:	Polyclonal
Immunogen:	The antiserum was produced against synthesized peptide derived from internal of human DLGP1.
Formulation:	Phosphate buffered saline (without Mg <sup>2+</sup> and Ca <sup>2+</sup> ), pH 7.4, 150mM NaCl, 0.02% sodium azide and 50% glycerol.
Concentration:	lot specific
Purification:	The antibody was affinity-purified from rabbit antiserum by affinity-chromatography using epitope-specific immunogen.
Conjugation:	Unconjugated
Storage:	Store at -20°C as received.
Stability:	Stable for 12 months from date of receipt.
Gene Name:	DLG associated protein 1
Database Link:	<a href="#">NP_001003809</a> <a href="#">Entrez Gene 65040 Rat</a> <a href="#">Entrez Gene 224997 Mouse</a> <a href="#">Entrez Gene 9229 Human</a> <a href="#">O14490</a>
Synonyms:	DAP-1; DAP-1-ALPHA; DAP-1-BETA; DAP1; DLGAP1A; DLGAP1B; GKAP; hGKAP; SAPAP1
Note:	DLGP1 antibody detects endogenous levels of total DLGP1 protein.

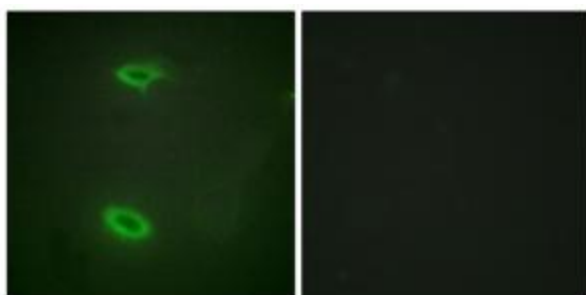


[View online »](#)

## Product images:



Western blot analysis of extracts from HepG2 cells, using DLGAP1 antibody. The lane on the right is treated with the synthesized peptide.



Immunofluorescence analysis of HeLa cells, using DLGAP1 antibody. The picture on the right is treated with the synthesized peptide.