

## Product datasheet for **TA314880**

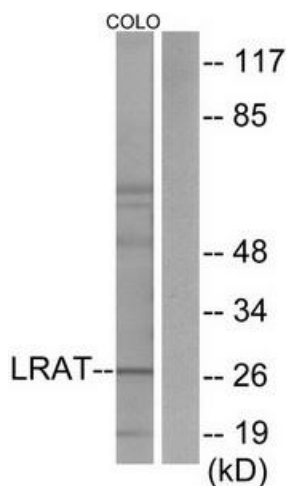
### LRAT Rabbit Polyclonal Antibody

#### Product data:

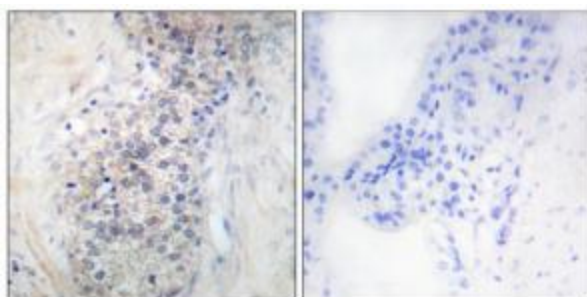
Product Type:	Primary Antibodies
Applications:	IF, IHC, WB
Recommended Dilution:	WB: 1:500~1:3000, IHC: 1:50~1:100, IF: 1:100~1:500, ELISA: 1:10000
Reactivity:	Human, Mouse, Rat
Host:	Rabbit
Isotype:	IgG
Clonality:	Polyclonal
Immunogen:	The antiserum was produced against synthesized peptide derived from internal of human LRAT.
Formulation:	Phosphate buffered saline (without Mg <sup>2+</sup> and Ca <sup>2+</sup> ), pH 7.4, 150mM NaCl, 0.02% sodium azide and 50% glycerol.
Concentration:	lot specific
Purification:	The antibody was affinity-purified from rabbit antiserum by affinity-chromatography using epitope-specific immunogen.
Conjugation:	Unconjugated
Storage:	Store at -20°C as received.
Stability:	Stable for 12 months from date of receipt.
Gene Name:	lecithin retinol acyltransferase (phosphatidylcholine--retinol O-acyltransferase)
Database Link:	<a href="#">NP_004735</a> <a href="#">Entrez Gene 64047 Rat</a> <a href="#">Entrez Gene 79235 Mouse</a> <a href="#">Entrez Gene 9227 Human</a> <a href="#">O95237</a>
Synonyms:	LCA14
Note:	LRAT antibody detects endogenous levels of total LRAT protein.
Protein Families:	Druggable Genome, Transmembrane
Protein Pathways:	Retinol metabolism



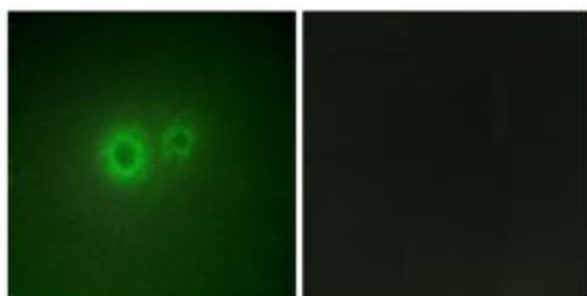
[View online »](#)

**Product images:**


Western blot analysis of extracts from COLO205 cells, using LRAT antibody. The lane on the right is treated with the synthesized peptide.



Immunohistochemistry analysis of paraffin-embedded human prostate carcinoma tissue using LRAT antibody. The picture on the right is treated with the synthesized peptide.



Immunofluorescence analysis of HUVEC cells, using LRAT antibody. The picture on the right is treated with the synthesized peptide.