

Product datasheet for **TA314873**

GEF H1 (ARHGEF2) Rabbit Polyclonal Antibody

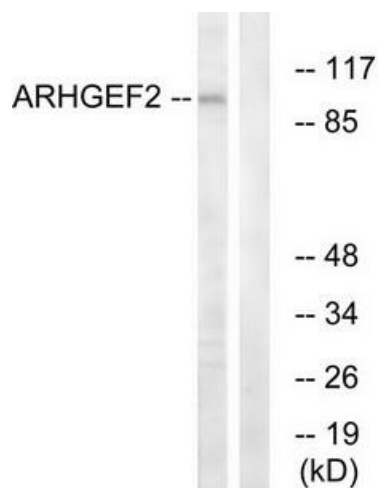
Product data:

Product Type:	Primary Antibodies
Applications:	WB
Recommended Dilution:	WB: 1:500~1:3000, ELISA: 1:20000
Reactivity:	Human, Rat
Host:	Rabbit
Isotype:	IgG
Clonality:	Polyclonal
Immunogen:	The antiserum was produced against synthesized peptide derived from internal of human ARHGEF2.
Formulation:	Phosphate buffered saline (without Mg ²⁺ and Ca ²⁺), pH 7.4, 150mM NaCl, 0.02% sodium azide and 50% glycerol.
Concentration:	lot specific
Purification:	The antibody was affinity-purified from rabbit antiserum by affinity-chromatography using epitope-specific immunogen.
Conjugation:	Unconjugated
Storage:	Store at -20°C as received.
Stability:	Stable for 12 months from date of receipt.
Gene Name:	Rho/Rac guanine nucleotide exchange factor 2
Database Link:	NP_001155855 Entrez Gene 310635 RatEntrez Gene 9181 Human Q92974
Synonyms:	GEF; GEF-H1; GEFH1; LFP40; P40
Note:	ARHGEF2 antibody detects endogenous levels of total ARHGEF2 protein.
Protein Families:	Druggable Genome
Protein Pathways:	Pathogenic Escherichia coli infection



[View online »](#)

Product images:



Western blot analysis of extracts from RAW264.7 cells, using ARHGEF2 antibody. The lane on the right is treated with the synthesized peptide.