

Product datasheet for **TA314868**

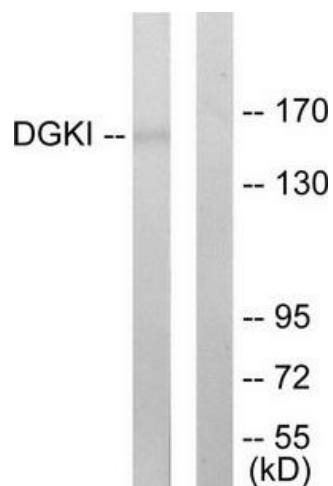
DGKI Rabbit Polyclonal Antibody

Product data:

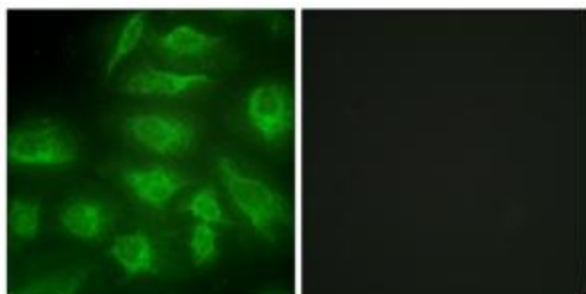
| | |
|-----------------------|--|
| Product Type: | Primary Antibodies |
| Applications: | IF, WB |
| Recommended Dilution: | WB: 1:500~1:3000, IF: 1:100~1:500, ELISA: 1:20000 |
| Reactivity: | Human, Rat |
| Host: | Rabbit |
| Isotype: | IgG |
| Clonality: | Polyclonal |
| Immunogen: | The antiserum was produced against synthesized peptide derived from C-terminal of human DGKI. |
| Formulation: | Phosphate buffered saline (without Mg ²⁺ and Ca ²⁺), pH 7.4, 150mM NaCl, 0.02% sodium azide and 50% glycerol. |
| Concentration: | lot specific |
| Purification: | The antibody was affinity-purified from rabbit antiserum by affinity-chromatography using epitope-specific immunogen. |
| Conjugation: | Unconjugated |
| Storage: | Store at -20°C as received. |
| Stability: | Stable for 12 months from date of receipt. |
| Gene Name: | diacylglycerol kinase iota |
| Database Link: | NP_004708 Entrez Gene 688705 Rat Entrez Gene 9162 Human O75912 |
| Synonyms: | DGK-IOTA |
| Note: | DGKI antibody detects endogenous levels of total DGKI protein. |
| Protein Families: | Druggable Genome |
| Protein Pathways: | Glycerolipid metabolism, Glycerophospholipid metabolism, Metabolic pathways, Phosphatidylinositol signaling system |



[View online »](#)

Product images:

Western blot analysis of extracts from 293 cells, using DGKI antibody. The lane on the right is treated with the synthesized peptide.



Immunofluorescence analysis of HeLa cells, using DGKI antibody. The picture on the right is treated with the synthesized peptide.