

## Product datasheet for **TA314866**

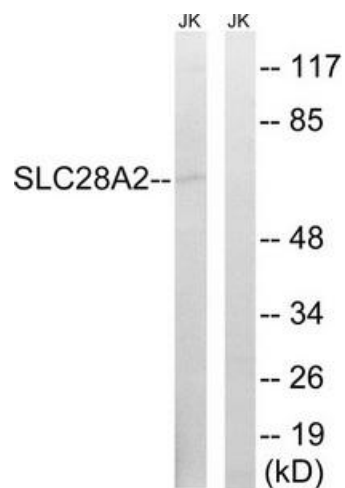
### SLC28A2 Rabbit Polyclonal Antibody

#### Product data:

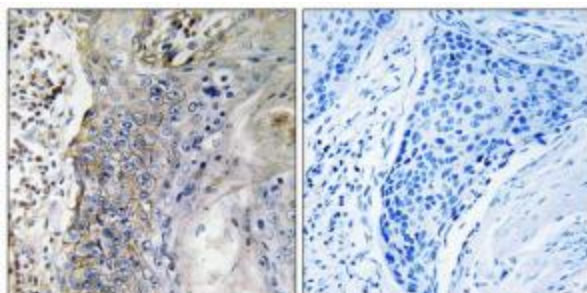
|                       |  |
|-----------------------|--|
| Product Type:         | Primary Antibodies   |
| Applications:         | IHC, WB  |
| Recommended Dilution: | WB: 1:500~1:3000, IHC: 1:50~1:100, ELISA: 1:10000  |
| Reactivity:           | Human, Rat   |
| Host:                 | Rabbit   |
| Isotype:              | IgG  |
| Clonality:            | Polyclonal   |
| Immunogen:            | The antiserum was produced against synthesized peptide derived from internal of human SLC28A2.                                       |
| Formulation:          | Phosphate buffered saline (without Mg <sup>2+</sup> and Ca <sup>2+</sup> ), pH 7.4, 150mM NaCl, 0.02% sodium azide and 50% glycerol. |
| Concentration:        | lot specific   |
| Purification:         | The antibody was affinity-purified from rabbit antiserum by affinity-chromatography using epitope-specific immunogen.                |
| Conjugation:          | Unconjugated   |
| Storage:              | Store at -20°C as received.  |
| Stability:            | Stable for 12 months from date of receipt.   |
| Gene Name:            | solute carrier family 28 member 2  |
| Database Link:        | <a href="#">NP_004203</a><br><a href="#">Entrez Gene 60423 Rat</a> <a href="#">Entrez Gene 9153 Human</a><br><a href="#">O43868</a>  |
| Synonyms:             | CNT2; HCNT2; HsT17153; SPNT1   |
| Note:                 | SLC28A2 antibody detects endogenous levels of total SLC28A2 protein.   |
| Protein Families:     | Transmembrane  |



[View online »](#)

**Product images:**

Western blot analysis of extracts from Jurkat cells, using SLC28A2 antibody. The lane on the right is treated with the synthesized peptide.



Immunohistochemistry analysis of paraffin-embedded human lung carcinoma tissue, using SLC28A2 antibody. The picture on the right is treated with the synthesized peptide.