

## Product datasheet for **TA314863**

### ARHGEF1 Rabbit Polyclonal Antibody

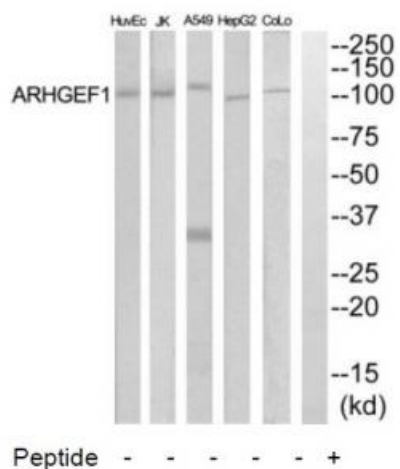
#### Product data:

Product Type:	Primary Antibodies
Applications:	WB
Recommended Dilution:	WB: 1:500~1:3000, IHC: 1:50~1:100, ELISA: 1:40000
Reactivity:	Mouse, Human, Rat
Host:	Rabbit
Isotype:	IgG
Clonality:	Polyclonal
Immunogen:	The antiserum was produced against synthesized peptide derived from internal of human ARHGEF1.
Formulation:	Phosphate buffered saline (without Mg <sup>2+</sup> and Ca <sup>2+</sup> ), pH 7.4, 150mM NaCl, 0.02% sodium azide and 50% glycerol.
Concentration:	lot specific
Purification:	The antibody was affinity-purified from rabbit antiserum by affinity-chromatography using epitope-specific immunogen.
Conjugation:	Unconjugated
Storage:	Store at -20°C as received.
Stability:	Stable for 12 months from date of receipt.
Gene Name:	Rho guanine nucleotide exchange factor 1
Database Link:	<a href="#">NP_004697</a> <a href="#">Entrez Gene 16801 Mouse</a> <a href="#">Entrez Gene 60323 Rat</a> <a href="#">Entrez Gene 9138 Human</a> <a href="#">Q92888</a>
Synonyms:	GEF1; LBCL2; LSC; P115-RHOGEF; SUB1.5
Note:	ARHGEF1 antibody detects endogenous levels of total ARHGEF1 protein.
Protein Pathways:	Regulation of actin cytoskeleton, Vascular smooth muscle contraction



[View online »](#)

Product images:



Western blot analysis of extracts from COLO205, HepG2, HuvEc and Jurkat cells, using ARHGEF1 antibody. The lane on the right is treated with the synthesized peptide.