

Product datasheet for **TA314861**

AIF (AIFM1) Rabbit Polyclonal Antibody

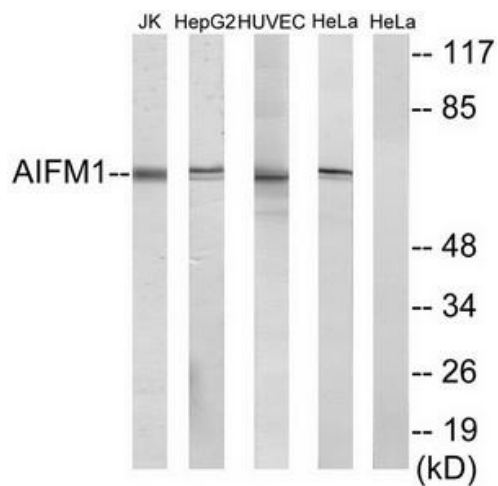
Product data:

Product Type:	Primary Antibodies
Applications:	WB
Recommended Dilution:	WB: 1:500~1:3000, ELISA: 1:5000
Reactivity:	Human, Mouse, Rat
Host:	Rabbit
Isotype:	IgG
Clonality:	Polyclonal
Immunogen:	The antiserum was produced against synthesized peptide derived from internal of human AIFM1.
Formulation:	Phosphate buffered saline (without Mg ²⁺ and Ca ²⁺), pH 7.4, 150mM NaCl, 0.02% sodium azide and 50% glycerol.
Concentration:	lot specific
Purification:	The antibody was affinity-purified from rabbit antiserum by affinity-chromatography using epitope-specific immunogen.
Conjugation:	Unconjugated
Storage:	Store at -20°C as received.
Stability:	Stable for 12 months from date of receipt.
Gene Name:	apoptosis inducing factor, mitochondria associated 1
Database Link:	NP_001124318 Entrez Gene 26926 MouseEntrez Gene 83533 RatEntrez Gene 9131 Human O95831
Synonyms:	AIF; CMT2D; CMTX4; COWCK; COXPD6; NADMR; NAMSD; PDCD8
Note:	AIFM1 antibody detects endogenous levels of total AIFM1 protein.
Protein Families:	Druggable Genome, Transmembrane
Protein Pathways:	Apoptosis



[View online »](#)

Product images:



Western blot analysis of extracts from Jurkat cells, HepG2 cells, HUVEC cells and HeLa cells, using AIFM1 antibody. The lane on the right is treated with the synthesized peptide.