

Product datasheet for **TA314860**

SLC16A3 Rabbit Polyclonal Antibody

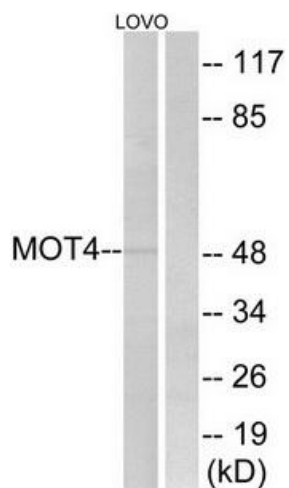
Product data:

Product Type:	Primary Antibodies
Applications:	WB
Recommended Dilution:	WB: 1:500~1:3000, ELISA: 1:40000
Reactivity:	Human, Mouse, Rat
Host:	Rabbit
Isotype:	IgG
Clonality:	Polyclonal
Immunogen:	The antiserum was produced against synthesized peptide derived from internal of human MOT4.
Formulation:	Phosphate buffered saline (without Mg ²⁺ and Ca ²⁺), pH 7.4, 150mM NaCl, 0.02% sodium azide and 50% glycerol.
Concentration:	lot specific
Purification:	The antibody was affinity-purified from rabbit antiserum by affinity-chromatography using epitope-specific immunogen.
Conjugation:	Unconjugated
Storage:	Store at -20°C as received.
Stability:	Stable for 12 months from date of receipt.
Gene Name:	solute carrier family 16 member 3
Database Link:	NP_001035887 Entrez Gene 80878 Rat Entrez Gene 80879 Mouse Entrez Gene 9123 Human O15427
Synonyms:	MCT-3; MCT-4; MCT 3; MCT3; MCT 4; MCT4
Note:	MOT4 antibody detects endogenous levels of total MOT4 protein.
Protein Families:	Transmembrane



[View online »](#)

Product images:



Western blot analysis of extracts from LOVO cells, using MOT4 antibody. The lane on the right is treated with the synthesized peptide.