

Product datasheet for **TA314855**

TBX18 Rabbit Polyclonal Antibody

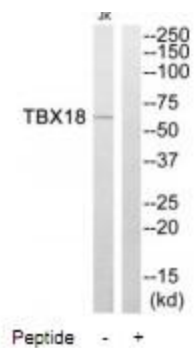
Product data:

Product Type:	Primary Antibodies
Applications:	WB
Recommended Dilution:	WB: 1:500~1:3000, ELISA: 1:20000
Reactivity:	Human, Mouse, Rat
Host:	Rabbit
Isotype:	IgG
Clonality:	Polyclonal
Immunogen:	The antiserum was produced against synthesized peptide derived from internal of human TBX18.
Formulation:	Phosphate buffered saline (without Mg ²⁺ and Ca ²⁺), pH 7.4, 150mM NaCl, 0.02% sodium azide and 50% glycerol.
Concentration:	lot specific
Purification:	The antibody was affinity-purified from rabbit antiserum by affinity-chromatography using epitope-specific immunogen.
Conjugation:	Unconjugated
Storage:	Store at -20°C as received.
Stability:	Stable for 12 months from date of receipt.
Gene Name:	T-box 18
Database Link:	NP_001073977 Entrez Gene 76365 Mouse Entrez Gene 315870 Rat Entrez Gene 9096 Human O95935
Synonyms:	2810012F10Rik; 2810404D13Rik
Note:	TBX18 antibody detects endogenous levels of total TBX18 protein.



[View online »](#)

Product images:



Western blot analysis of extracts from Jurkat cells, using TBX18 antibody. The lane on the right is treated with the synthesized peptide.