

Product datasheet for **TA314850**

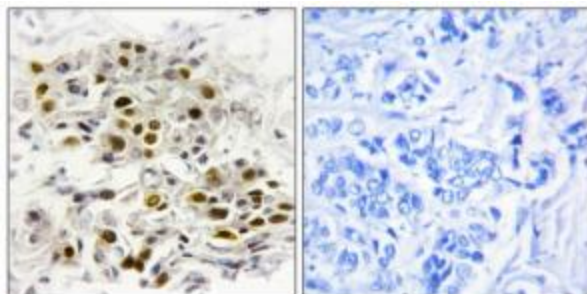
MAP3K6 Rabbit Polyclonal Antibody

Product data:

Product Type:	Primary Antibodies
Applications:	IHC
Recommended Dilution:	IHC: 1:50~1:100, ELISA: 1:1000
Reactivity:	Human, Mouse
Host:	Rabbit
Isotype:	IgG
Clonality:	Polyclonal
Immunogen:	The antiserum was produced against synthesized peptide derived from internal of human MAP3K6.
Formulation:	Phosphate buffered saline (without Mg ²⁺ and Ca ²⁺), pH 7.4, 150mM NaCl, 0.02% sodium azide and 50% glycerol.
Concentration:	lot specific
Purification:	The antibody was affinity-purified from rabbit antiserum by affinity-chromatography using epitope-specific immunogen.
Conjugation:	Unconjugated
Storage:	Store at -20°C as received.
Stability:	Stable for 12 months from date of receipt.
Gene Name:	mitogen-activated protein kinase kinase kinase 6
Database Link:	NP_004663 Entrez Gene 53608 Mouse Entrez Gene 9064 Human O95382
Synonyms:	ASK2; MAPKKK6; MEKK6
Note:	MAP3K6 antibody detects endogenous levels of total MAP3K6 protein.
Protein Families:	Druggable Genome, Protein Kinase
Protein Pathways:	MAPK signaling pathway



[View online »](#)

Product images:

Immunohistochemistry analysis of paraffin-embedded human breast carcinoma tissue, using MAP3K6 antibody. The picture on the right is treated with the synthesized peptide.