

Product datasheet for **TA314849**

RAI3 (GPCR5A) Rabbit Polyclonal Antibody

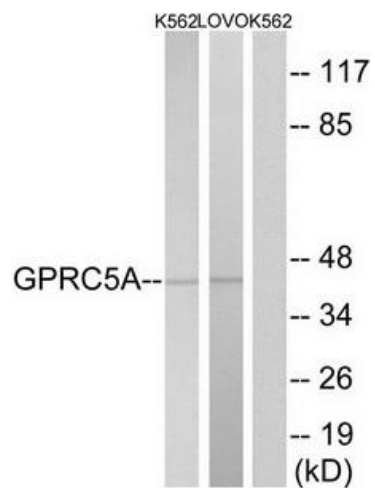
Product data:

Product Type:	Primary Antibodies
Applications:	WB
Recommended Dilution:	WB: 1:500~1:3000, ELISA: 1:10000
Reactivity:	Human, Mouse, Rat
Host:	Rabbit
Isotype:	IgG
Clonality:	Polyclonal
Immunogen:	The antiserum was produced against synthesized peptide derived from internal of human GPCR5A.
Formulation:	Phosphate buffered saline (without Mg ²⁺ and Ca ²⁺), pH 7.4, 150mM NaCl, 0.02% sodium azide and 50% glycerol.
Purification:	The antibody was affinity-purified from rabbit antiserum by affinity-chromatography using epitope-specific immunogen.
Conjugation:	Unconjugated
Storage:	Store at -20°C as received.
Stability:	Stable for 12 months from date of receipt.
Gene Name:	G protein-coupled receptor class C group 5 member A
Database Link:	NP_003970 Entrez Gene 232431 Mouse Entrez Gene 312790 Rat Entrez Gene 9052 Human Q8NFJ5
Synonyms:	GPCR5A; PEIG-1; RAI3; RAIG1; TIG1
Note:	GPCR5A antibody detects endogenous levels of total GPCR5A protein.
Protein Families:	Druggable Genome, GPCR, Transmembrane



[View online »](#)

Product images:



Western blot analysis of extracts from K562 cells and LOVO cells, using GPRC5A antibody. The lane on the right is treated with the synthesized peptide.