

Product datasheet for **TA314847**

TAF1 48 (TAF1A) Rabbit Polyclonal Antibody

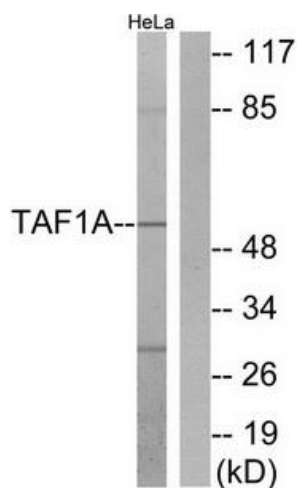
Product data:

Product Type:	Primary Antibodies
Applications:	WB
Recommended Dilution:	WB: 1:500~1:3000, ELISA: 1:5000
Reactivity:	Human, Rat
Host:	Rabbit
Isotype:	IgG
Clonality:	Polyclonal
Immunogen:	The antiserum was produced against synthesized peptide derived from internal of human TAF1A.
Formulation:	Phosphate buffered saline (without Mg ²⁺ and Ca ²⁺), pH 7.4, 150mM NaCl, 0.02% sodium azide and 50% glycerol.
Concentration:	lot specific
Purification:	The antibody was affinity-purified from rabbit antiserum by affinity-chromatography using epitope-specific immunogen.
Conjugation:	Unconjugated
Storage:	Store at -20°C as received.
Stability:	Stable for 12 months from date of receipt.
Gene Name:	TATA-box binding protein associated factor, RNA polymerase I subunit A
Database Link:	NP_647603 Entrez Gene 360893 RatEntrez Gene 9015 Human Q15573
Synonyms:	MGC:17061; RAFI48; SL1; TAFI48
Note:	TAF1A antibody detects endogenous levels of total TAF1A protein.
Protein Families:	Transcription Factors



[View online »](#)

Product images:



Western blot analysis of extracts from HeLa cells, using TAF1A antibody. The lane on the right is treated with the synthesized peptide.