

## Product datasheet for **TA314845**

### Proteinase Activated Receptor 4 (F2RL3) Rabbit Polyclonal Antibody

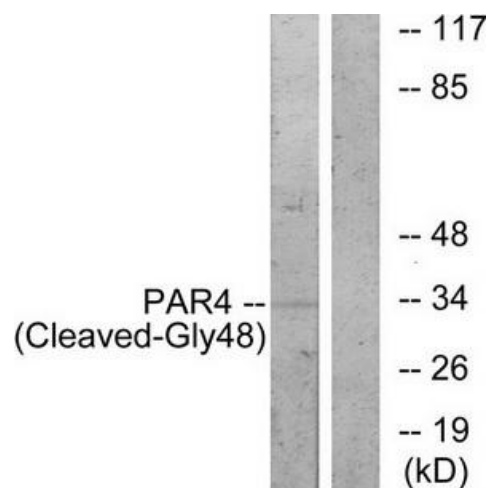
#### Product data:

Product Type:	Primary Antibodies
Applications:	WB
Recommended Dilution:	WB: 1:500~1:3000, ELISA: 1:1000
Reactivity:	Human
Host:	Rabbit
Isotype:	IgG
Clonality:	Polyclonal
Immunogen:	The antiserum was produced against synthesized peptide derived from human PAR4.
Formulation:	Phosphate buffered saline (without Mg <sup>2+</sup> and Ca <sup>2+</sup> ), pH 7.4, 150mM NaCl, 0.02% sodium azide and 50% glycerol.
Concentration:	lot specific
Purification:	The antibody was affinity-purified from rabbit antiserum by affinity-chromatography using epitope-specific immunogen.
Conjugation:	Unconjugated
Storage:	Store at -20°C as received.
Stability:	Stable for 12 months from date of receipt.
Gene Name:	F2R like thrombin/trypsin receptor 3
Database Link:	<a href="#">NP_003941</a> <a href="#">Entrez Gene 9002 Human</a> <a href="#">Q96RI0</a>
Synonyms:	PAR4
Note:	PAR4 (Cleaved-Gly48) antibody detects endogenous levels of fragment of activated PAR4 resulting from cleavage adjacent to Gly48.
Protein Families:	Druggable Genome, GPCR, Transmembrane
Protein Pathways:	Neuroactive ligand-receptor interaction



[View online »](#)

## Product images:



Western blot analysis of extracts from 3T3 cells, treated with etoposide (etoposide, 1 hour), using PAR4 (Cleaved-Gly48) antibody. The lane on the right is treated with the synthesized peptide.