

Product datasheet for **TA314842**

MSK2 / RSK-B (RPS6KA4) Rabbit Polyclonal Antibody

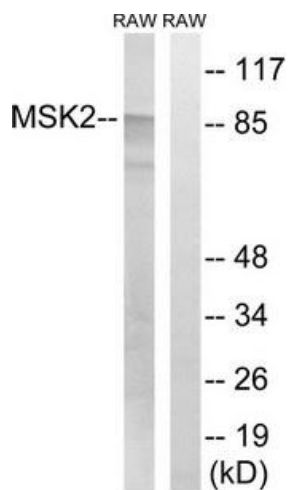
Product data:

Product Type:	Primary Antibodies
Applications:	WB
Recommended Dilution:	WB: 1:500~1:3000, ELISA: 1:5000
Reactivity:	Human, Mouse
Host:	Rabbit
Isotype:	IgG
Clonality:	Polyclonal
Immunogen:	The antiserum was produced against synthesized non-phosphopeptide derived from human MSK2 around the phosphorylation site of threonine 568 (M-Q-TP-P-C).
Formulation:	Phosphate buffered saline (without Mg ²⁺ and Ca ²⁺), pH 7.4, 150mM NaCl, 0.02% sodium azide and 50% glycerol.
Concentration:	lot specific
Purification:	The antibody was affinity-purified from rabbit antiserum by affinity-chromatography using epitope-specific immunogen.
Conjugation:	Unconjugated
Storage:	Store at -20°C as received.
Stability:	Stable for 12 months from date of receipt.
Gene Name:	ribosomal protein S6 kinase A4
Database Link:	NP_001006945 Entrez Gene 56613 Mouse Entrez Gene 8986 Human O75676
Synonyms:	MSK2; RSK-B
Note:	MSK2 (Ab-568) antibody detects endogenous levels of total MSK2 protein.
Protein Families:	Druggable Genome, Protein Kinase, Transcription Factors
Protein Pathways:	MAPK signaling pathway, Neurotrophin signaling pathway



[View online »](#)

Product images:



Western blot analysis of extracts from RAW264.7 cells, treated with UV (5mins), using MSK2 (Ab-568) antibody. The lane on the right is treated with the synthesized peptide.