

Product datasheet for **TA314835**

RAB7L1 (RAB29) Rabbit Polyclonal Antibody

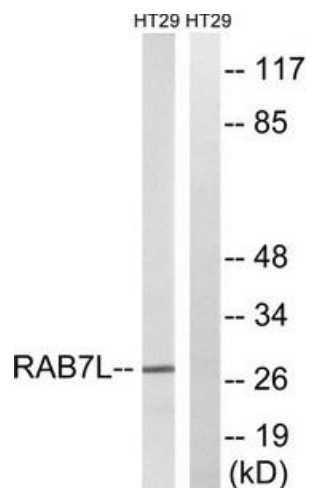
Product data:

Product Type:	Primary Antibodies
Applications:	WB
Recommended Dilution:	WB: 1:500~1:3000, ELISA: 1:20000
Reactivity:	Human, Mouse, Rat
Host:	Rabbit
Isotype:	IgG
Clonality:	Polyclonal
Immunogen:	The antiserum was produced against synthesized peptide derived from internal of human RAB7L1.
Formulation:	Phosphate buffered saline (without Mg ²⁺ and Ca ²⁺), pH 7.4, 150mM NaCl, 0.02% sodium azide and 50% glycerol.
Purification:	The antibody was affinity-purified from rabbit antiserum by affinity-chromatography using epitope-specific immunogen.
Conjugation:	Unconjugated
Storage:	Store at -20°C as received.
Stability:	Stable for 12 months from date of receipt.
Gene Name:	RAB29, member RAS oncogene family
Database Link:	NP_001129134 Entrez Gene 171122 Rat Entrez Gene 226422 Mouse Entrez Gene 8934 Human O14966
Synonyms:	RAB7L; RAB7L1
Note:	RAB7L1 antibody detects endogenous levels of total RAB7L1 protein.
Protein Families:	Druggable Genome



[View online »](#)

Product images:



Western blot analysis of extracts from HT-29 cells, using RAB7L1 antibody. The lane on the right is treated with the synthesized peptide.