

Product datasheet for **TA314833**

CACNA1H Rabbit Polyclonal Antibody

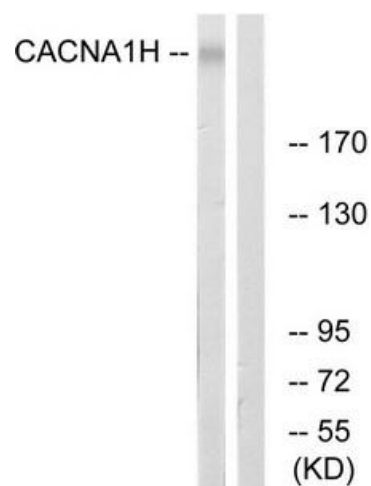
Product data:

Product Type:	Primary Antibodies
Applications:	WB
Recommended Dilution:	WB: 1:500~1:3000, ELISA: 1:10000
Reactivity:	Human, Mouse, Rat
Host:	Rabbit
Isotype:	IgG
Clonality:	Polyclonal
Immunogen:	The antiserum was produced against synthesized peptide derived from internal of human CACNA1H.
Formulation:	Phosphate buffered saline (without Mg ²⁺ and Ca ²⁺), pH 7.4, 150mM NaCl, 0.02% sodium azide and 50% glycerol.
Concentration:	lot specific
Purification:	The antibody was affinity-purified from rabbit antiserum by affinity-chromatography using epitope-specific immunogen.
Conjugation:	Unconjugated
Storage:	Store at -20°C as received.
Stability:	Stable for 12 months from date of receipt.
Gene Name:	calcium voltage-gated channel subunit alpha1 H
Database Link:	NP_001005407 Entrez Gene 58226 MouseEntrez Gene 114862 RatEntrez Gene 8912 Human O95180
Synonyms:	CACNA1HB; Cav3.2; ECA6; EIG6; HALD4
Note:	CACNA1H antibody detects endogenous levels of total CACNA1H protein.
Protein Families:	Druggable Genome, Ion Channels: Calcium, Transmembrane
Protein Pathways:	Calcium signaling pathway, MAPK signaling pathway



[View online »](#)

Product images:



Western blot analysis of extracts from A549 cells, using CACNA1H antibody. The lane on the right is treated with the synthesized peptide.