

Product datasheet for **TA314832**

BUD31 Rabbit Polyclonal Antibody

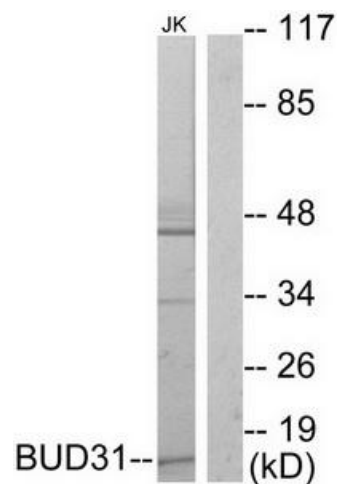
Product data:

| | |
|------------------------------|--|
| Product Type: | Primary Antibodies |
| Applications: | WB |
| Recommended Dilution: | WB: 1:500~1:3000, ELISA: 1:20000 |
| Reactivity: | Human, Mouse, Rat |
| Host: | Rabbit |
| Isotype: | IgG |
| Clonality: | Polyclonal |
| Immunogen: | The antiserum was produced against synthesized peptide derived from internal of human BUD31. |
| Formulation: | Phosphate buffered saline (without Mg ²⁺ and Ca ²⁺), pH 7.4, 150mM NaCl, 0.02% sodium azide and 50% glycerol. |
| Concentration: | lot specific |
| Purification: | The antibody was affinity-purified from rabbit antiserum by affinity-chromatography using epitope-specific immunogen. |
| Conjugation: | Unconjugated |
| Storage: | Store at -20°C as received. |
| Stability: | Stable for 12 months from date of receipt. |
| Gene Name: | BUD31 homolog |
| Database Link: | NP_003901 Entrez Gene 89819 Rat Entrez Gene 231889 Mouse Entrez Gene 8896 Human P41223 |
| Synonyms: | Cwc14; EDG-2; EDG2; fSAP17; G10; YCR063W |
| Note: | BUD31 antibody detects endogenous levels of total BUD31 protein. |
| Protein Families: | Transcription Factors |
| Protein Pathways: | Spliceosome |



[View online »](#)

Product images:



Western blot analysis of extracts from Jurkat cells, using BUD31 antibody. The lane on the right is treated with the synthesized peptide.