

Product datasheet for **TA314831**

EIF2S2 Rabbit Polyclonal Antibody

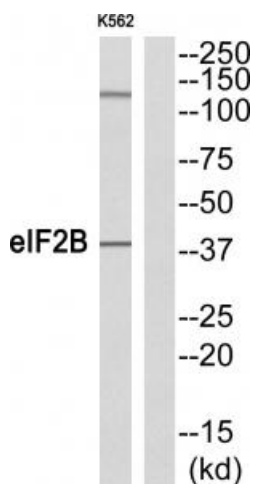
Product data:

Product Type:	Primary Antibodies
Applications:	WB
Recommended Dilution:	WB: 1:500~1:3000, ELISA: 1:40000
Reactivity:	Human, Mouse
Host:	Rabbit
Isotype:	IgG
Clonality:	Polyclonal
Immunogen:	The antiserum was produced against synthesized peptide derived from N-terminal of human eIF2B.
Formulation:	Phosphate buffered saline (without Mg ²⁺ and Ca ²⁺), pH 7.4, 150mM NaCl, 0.02% sodium azide and 50% glycerol.
Concentration:	lot specific
Purification:	The antibody was affinity-purified from rabbit antiserum by affinity-chromatography using epitope-specific immunogen.
Conjugation:	Unconjugated
Storage:	Store at -20°C as received.
Stability:	Stable for 12 months from date of receipt.
Gene Name:	eukaryotic translation initiation factor 2 subunit beta
Database Link:	NP_003899 Entrez Gene 67204 Mouse Entrez Gene 8894 Human P20042
Synonyms:	eIF-2-beta; EIF2; EIF2B; EIF2beta; PPP1R67
Note:	eIF2B (Ab-67) antibody detects endogenous levels of total eIF2B protein.

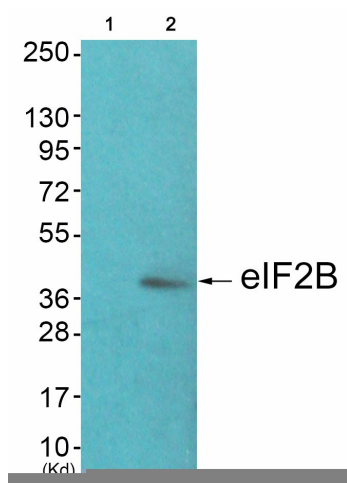


[View online »](#)

Product images:



Western blot analysis of extracts from K562 cells, using eIF2B (Ab-67) antibody. The lane on the right is treated with the synthesized peptide.



Western blot analysis of extracts from JK cells (Lane 2), using eIF2B (Ab-67) Antibody. The lane on the left is treated with synthesized peptide.