

Product datasheet for **TA314830**

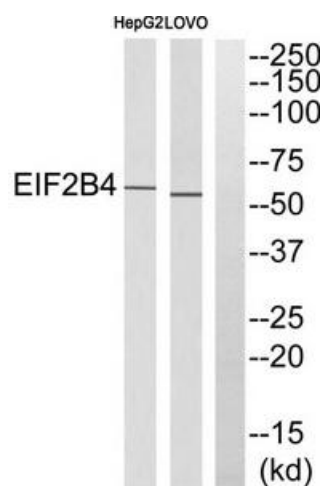
EIF2B4 Rabbit Polyclonal Antibody

Product data:

Product Type:	Primary Antibodies
Applications:	WB
Recommended Dilution:	WB: 1:500~1:3000, ELISA: 1:1000
Reactivity:	Human, Mouse, Rat
Host:	Rabbit
Isotype:	IgG
Clonality:	Polyclonal
Immunogen:	The antiserum was produced against synthesized peptide derived from internal of human EIF2B4.
Formulation:	Phosphate buffered saline (without Mg ²⁺ and Ca ²⁺), pH 7.4, 150mM NaCl, 0.02% sodium azide and 50% glycerol.
Concentration:	lot specific
Purification:	The antibody was affinity-purified from rabbit antiserum by affinity-chromatography using epitope-specific immunogen.
Conjugation:	Unconjugated
Storage:	Store at -20°C as received.
Stability:	Stable for 12 months from date of receipt.
Gene Name:	eukaryotic translation initiation factor 2B subunit delta
Database Link:	NP_001029288 Entrez Gene 13667 Mouse Entrez Gene 117019 Rat Entrez Gene 8890 Human Q9UI10
Synonyms:	EIF-2B; EIF2B; EIF2Bdelta
Note:	EIF2B4 antibody detects endogenous levels of total EIF2B4 protein.



[View online »](#)

Product images:


Western blot analysis of extracts from HepG2 cells and LOVO cells, using EIF2B4 antibody. The lane on the right is treated with the synthesized peptide.