

Product datasheet for **TA314829**

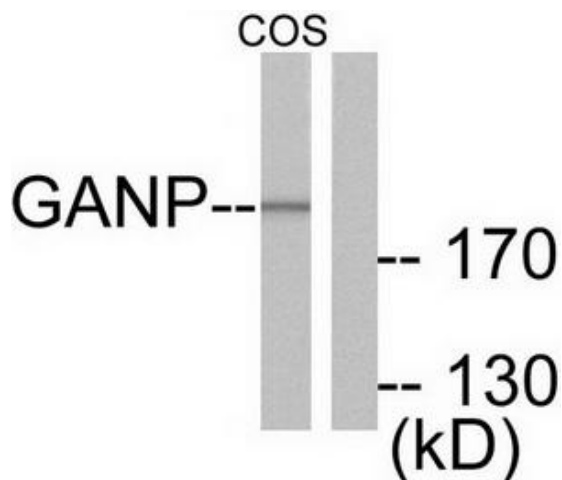
GANP (MCM3AP) Rabbit Polyclonal Antibody

Product data:

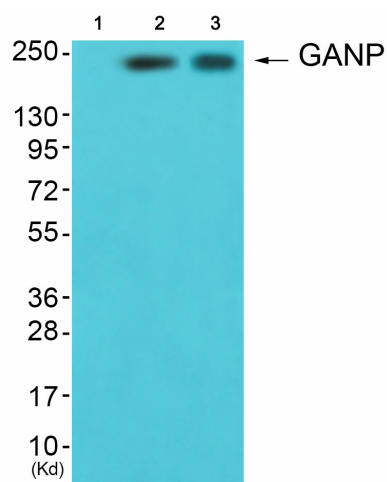
Product Type:	Primary Antibodies
Applications:	IHC, WB
Recommended Dilution:	WB: 1:500~1:3000, IHC: 1:50~1:100, ELISA: 1:5000
Reactivity:	Human, Mouse
Host:	Rabbit
Isotype:	IgG
Clonality:	Polyclonal
Immunogen:	The antiserum was produced against synthesized peptide derived from human GANP.
Formulation:	Phosphate buffered saline (without Mg ²⁺ and Ca ²⁺), pH 7.4, 150mM NaCl, 0.02% sodium azide and 50% glycerol.
Concentration:	lot specific
Purification:	The antibody was affinity-purified from rabbit antiserum by affinity-chromatography using epitope-specific immunogen.
Conjugation:	Unconjugated
Storage:	Store at -20°C as received.
Stability:	Stable for 12 months from date of receipt.
Gene Name:	minichromosome maintenance complex component 3 associated protein
Database Link:	NP_003897 Entrez Gene 54387 Mouse Entrez Gene 8888 Human O60318
Synonyms:	GANP; MAP80; SAC3
Note:	GANP antibody detects endogenous levels of total GANP protein.



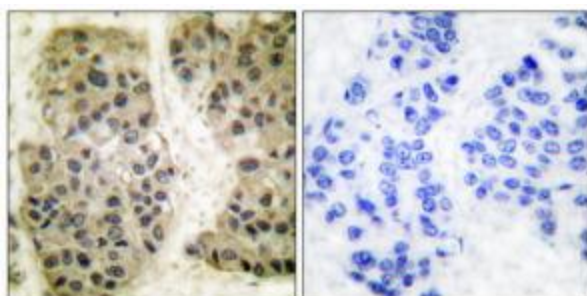
[View online »](#)

Product images:


Western blot analysis of extracts from NIH/3T3 cells, using GANP antibody (#TA314829). The lane on the right is treated with the synthesized peptide.



Western blot analysis of extracts from HepG2 cells (Lane 2) and A549 cells (Lane 3), using GANP Antibody. The lane on the left is treated with synthesized peptide.



Immunohistochemical analysis of paraffin-embedded human breast carcinoma tissue using GANP antibody (#TA314829). The picture on the right is treated with the synthesized peptide.