

Product datasheet for **TA314827**

Apc6 (CDC16) Rabbit Polyclonal Antibody

Product data:

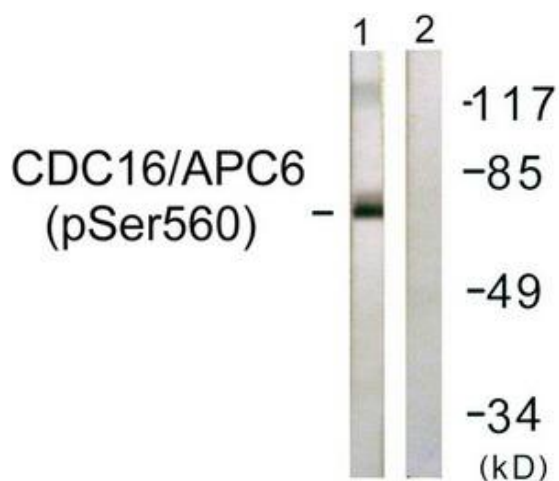
Product Type:	Primary Antibodies
Applications:	IF, IHC, WB
Recommended Dilution:	WB: 1:500~1:3000, IHC: 1:50~1:100, IF: 1:100~1:500, ELISA: 1:20000
Reactivity:	Human, Mouse
Modifications:	Phospho-specific
Host:	Rabbit
Isotype:	IgG
Clonality:	Polyclonal
Immunogen:	The antiserum was produced against synthesized phosphopeptide derived from human CDC16/APC6 around the phosphorylation site of serine 560 (I-I-SP-P-P).
Formulation:	Phosphate buffered saline (without Mg ²⁺ and Ca ²⁺), pH 7.4, 150mM NaCl, 0.02% sodium azide and 50% glycerol.
Concentration:	lot specific
Purification:	The antibody was affinity-purified from rabbit antiserum by affinity-chromatography using epitope-specific immunogen.
Conjugation:	Unconjugated
Storage:	Store at -20°C as received.
Stability:	Stable for 12 months from date of receipt.
Gene Name:	cell division cycle 16
Database Link:	NP_003894 Entrez Gene 69957 Mouse Entrez Gene 8881 Human Q13042
Synonyms:	ANAPC6; APC6; CDC16Hs; CUT9
Note:	CDC16/APC6 (Phospho-Ser560) antibody detects endogenous levels of CDC16/APC6 only when phosphorylated at serine 560.
Protein Families:	Druggable Genome



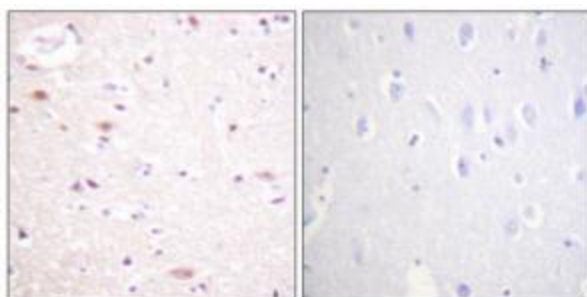
[View online »](#)

Protein Pathways: Cell cycle, Oocyte meiosis, Progesterone-mediated oocyte maturation, Ubiquitin mediated proteolysis

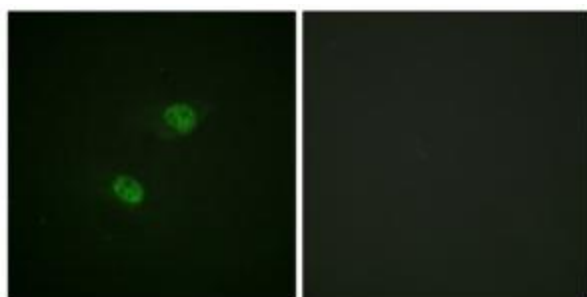
Product images:



Western blot analysis of extracts from HuvEc cells, using CDC16/APC6 (Phospho-Ser560) antibody. The lane on the right is treated with the synthesized peptide.



Immunohistochemistry analysis of paraffin-embedded human brain tissue using CDC16/APC6 (Phospho-Ser560) antibody. The picture on the right is treated with the synthesized peptide.



Immunofluorescence analysis of HeLa cells, using CDC16/APC6 (Phospho-Ser560) antibody. The picture on the right is treated with the synthesized peptide.