

## Product datasheet for **TA314824**

### ARHGEF7 Rabbit Polyclonal Antibody

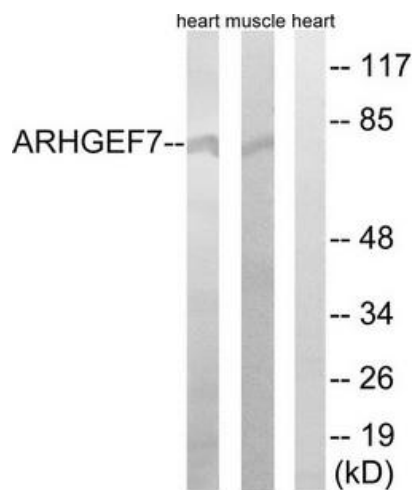
#### Product data:

|                       |  |
|-----------------------|--|
| Product Type:         | Primary Antibodies   |
| Applications:         | WB   |
| Recommended Dilution: | WB: 1:500~1:3000, ELISA: 1:5000  |
| Reactivity:           | Human, Mouse, Rat  |
| Host:                 | Rabbit   |
| Isotype:              | IgG  |
| Clonality:            | Polyclonal   |
| Immunogen:            | The antiserum was produced against synthesized peptide derived from internal of human ARHGEF7.                                       |
| Formulation:          | Phosphate buffered saline (without Mg <sup>2+</sup> and Ca <sup>2+</sup> ), pH 7.4, 150mM NaCl, 0.02% sodium azide and 50% glycerol. |
| Concentration:        | lot specific   |
| Purification:         | The antibody was affinity-purified from rabbit antiserum by affinity-chromatography using epitope-specific immunogen.                |
| Conjugation:          | Unconjugated   |
| Storage:              | Store at -20°C as received.  |
| Stability:            | Stable for 12 months from date of receipt.   |
| Gene Name:            | Rho guanine nucleotide exchange factor 7   |
| Database Link:        | <a href="#">NP_001106983</a><br><a href="#">Entrez Gene 54126 MouseEntrez Gene 114559 RatEntrez Gene 8874 Human Q14155</a>           |
| Synonyms:             | BETA-PIX; COOL-1; COOL1; Nbla10314; P50; P50BP; P85; P85COOL1; P85SPR; PAK3; PIXB  |
| Note:                 | ARHGEF7 antibody detects endogenous levels of total ARHGEF7 protein.   |
| Protein Pathways:     | Regulation of actin cytoskeleton   |



[View online »](#)

## Product images:



Western blot analysis of extracts from rat muscle cells and rat heart cells, using ARHGEF7 antibody. The lane on the right is treated with the synthesized peptide.