

Product datasheet for **TA314813**

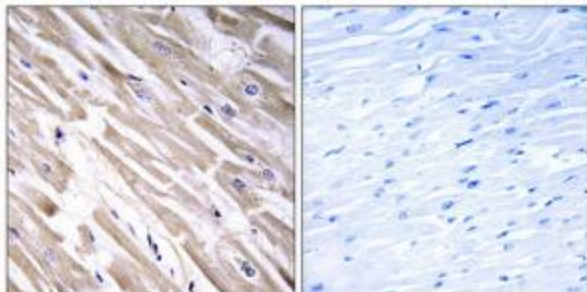
FGF18 Rabbit Polyclonal Antibody

Product data:

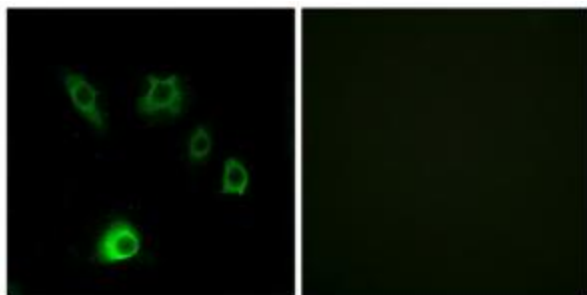
Product Type:	Primary Antibodies
Applications:	IF, IHC
Recommended Dilution:	IHC: 1:50~1:100, IF: 1:100~1:500, ELISA: 1:40000
Reactivity:	Human
Host:	Rabbit
Isotype:	IgG
Clonality:	Polyclonal
Immunogen:	The antiserum was produced against synthesized peptide derived from internal of human FGF18.
Formulation:	Phosphate buffered saline (without Mg ²⁺ and Ca ²⁺), pH 7.4, 150mM NaCl, 0.02% sodium azide and 50% glycerol.
Concentration:	lot specific
Purification:	The antibody was affinity-purified from rabbit antiserum by affinity-chromatography using epitope-specific immunogen.
Conjugation:	Unconjugated
Storage:	Store at -20°C as received.
Stability:	Stable for 12 months from date of receipt.
Gene Name:	fibroblast growth factor 18
Database Link:	NP_003853 Entrez Gene 8817 Human O76093
Synonyms:	FGF-18; ZFGF5
Note:	FGF18 antibody detects endogenous levels of total FGF18 protein.
Protein Families:	ES Cell Differentiation/IPS, Secreted Protein
Protein Pathways:	MAPK signaling pathway, Melanoma, Pathways in cancer, Regulation of actin cytoskeleton



[View online »](#)

Product images:

Immunohistochemistry analysis of paraffin-embedded human heart tissue using FGF18 antibody. The picture on the right is treated with the synthesized peptide.



Immunofluorescence analysis of HuvEc cells, using FGF18 antibody. The picture on the right is treated with the synthesized peptide.