

Product datasheet for **TA314810**

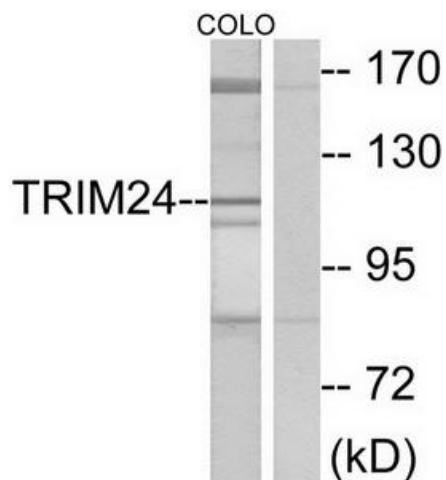
TIF1 alpha (TRIM24) Rabbit Polyclonal Antibody

Product data:

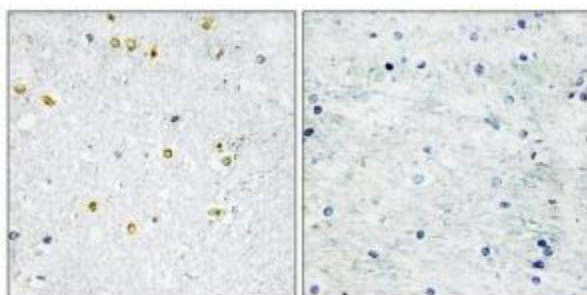
Product Type:	Primary Antibodies
Applications:	IHC, WB
Recommended Dilution:	WB: 1:500~1:3000, IHC: 1:50~1:100, ELISA: 1:20000
Reactivity:	Human, Mouse
Host:	Rabbit
Isotype:	IgG
Clonality:	Polyclonal
Immunogen:	The antiserum was produced against synthesized peptide derived from C-terminal of human TRIM24.
Formulation:	Phosphate buffered saline (without Mg ²⁺ and Ca ²⁺), pH 7.4, 150mM NaCl, 0.02% sodium azide and 50% glycerol.
Concentration:	lot specific
Purification:	The antibody was affinity-purified from rabbit antiserum by affinity-chromatography using epitope-specific immunogen.
Conjugation:	Unconjugated
Storage:	Store at -20°C as received.
Stability:	Stable for 12 months from date of receipt.
Gene Name:	tripartite motif containing 24
Database Link:	NP_003843 Entrez Gene 21848 Mouse Entrez Gene 8805 Human O15164
Synonyms:	hTIF1; PTC6; RNF82; TF1A; TIF1; TIF1A; TIF1ALPHA
Note:	TRIM24 antibody detects endogenous levels of total TRIM24 protein.
Protein Families:	Druggable Genome, Protein Kinase, Transcription Factors



[View online »](#)

Product images:

Western blot analysis of extracts from COLO cells, using TRIM24 antibody. The lane on the right is treated with the synthesized peptide.



Immunohistochemistry analysis of paraffin-embedded human brain tissue using TRIM24 antibody. The picture on the right is treated with the synthesized peptide.