

Product datasheet for **TA314809**

DR4 (TNFRSF10A) Rabbit Polyclonal Antibody

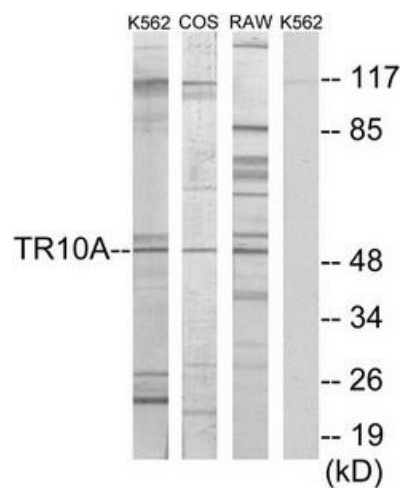
Product data:

| | |
|-----------------------|--|
| Product Type: | Primary Antibodies |
| Applications: | WB |
| Recommended Dilution: | WB: 1:500~1:3000, ELISA: 1:1000 |
| Reactivity: | Human |
| Host: | Rabbit |
| Isotype: | IgG |
| Clonality: | Polyclonal |
| Immunogen: | The antiserum was produced against synthesized peptide derived from C-terminal of human TR10A. |
| Formulation: | Phosphate buffered saline (without Mg ²⁺ and Ca ²⁺), pH 7.4, 150mM NaCl, 0.02% sodium azide and 50% glycerol. |
| Concentration: | lot specific |
| Purification: | The antibody was affinity-purified from rabbit antiserum by affinity-chromatography using epitope-specific immunogen. |
| Conjugation: | Unconjugated |
| Storage: | Store at -20°C as received. |
| Stability: | Stable for 12 months from date of receipt. |
| Gene Name: | tumor necrosis factor receptor superfamily member 10a |
| Database Link: | NP_003835 Entrez Gene 8797 Human O00220 |
| Synonyms: | APO2; CD261; DR4; TRAILR-1; TRAILR1 |
| Note: | TR10A antibody detects endogenous levels of total TR10A protein. |
| Protein Families: | Druggable Genome, Transmembrane |
| Protein Pathways: | Apoptosis, Cytokine-cytokine receptor interaction, Natural killer cell mediated cytotoxicity |



[View online »](#)

Product images:



Western blot analysis of extracts from K562 cells, COS-7 cells and RAW264.7 cells, using TR10A antibody. The lane on the right is treated with the synthesized peptide.